

check
2
acc? = June

THIRD BIENNIAL REPORT

OF THE

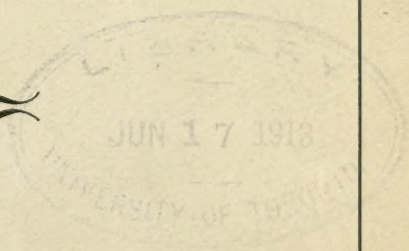
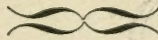
BOARD OF CURATORS

OF THE

LOUISIANA STATE MUSEUM

112

APRIL 1st, 1910—MARCH 31st, 1912



BATON ROUGE
RAMIRES-JONES PRINTING CO.
1912

(1-1)

THIRD BIENNIAL REPORT

OF THE

Board of Curators

OF THE

Louisiana State Museum

TO

His Excellency, the Governor and the General
Assembly of the State of Louisiana

APRIL 1st, 1910—MARCH 31st, 1912

New Orleans, La., 1912

“A Museum is an institution for the preservation of those objects which best illustrate the phenomena of Nature and the works of man and the utilization of these for the increase of knowledge and for the culture and enlightenment of the people.”

GEORGE B. GOODE.

*To His Excellency Luther Egbert Hall, Governor of Louisiana,
and the Members of the General Assembly of the State of
Louisiana.*

The Board of Curators of the Louisiana State Museum has the honor of submitting herewith a report of its operations from April 1, 1910, to March 31, 1912.

T. P. THOMPSON, *President.*

CONTENTS:

	PAGE.
List of Board Members.....	6
Report of T. P. Thompson, President.....	7
Report of Robert Glenk, Curator.....	11
Financial Statement.....	16
Attendance Figures.....	19
Inventory of Exhibits.....	20
Additions to Collections, Archeology.....	21
Additions to Collections, Ethnology.....	23
Additions to Collections, History.....	24
Additions to Collections, Arms and Weapons.....	46
Additions to Collections, Maps and Plans.....	48
Additions to Collections, Coins and Medals.....	50
Additions to Collections, Art Department.....	58
Additions to Collections, Natural History Department.....	69
Additions to Collections, Commercial Department.....	80
Additions to Library.....	81
Newspapers and Periodicals on File.....	106
Publications	107
Museum Service.....	108

LIST OF ILLUSTRATIONS

Jackson Square, State Museum buildings and Cathedral.

Front view of Cabildo (Department of History).

Spanish hand wrought iron gate, Cabildo. 1794.

View in transfer room, Department of History.

Caspar Cusach's Historical Collection.

T. P. Thompson Historical Collection.

John J. Audubon Mementoes.

Gallery of Paintings and Miscellaneous Art Objects.

Natural History and Commerce building (Presbytere).

Corner of Natural History building.

Side view of Natural History building.

Composite exhibit of Sugar Cane and Rice Products.

Agriculture and Botany.

Composite exhibit of Products of Louisiana.

Forestry Products.

Products obtained from the Cotton Plant.

Minerals and Soils.

Insects and Insect Products.

Library, Natural History building.

Topographic Maps and Transportation.

BOARD OF CURATORS LOUISIANA STATE MUSEUM

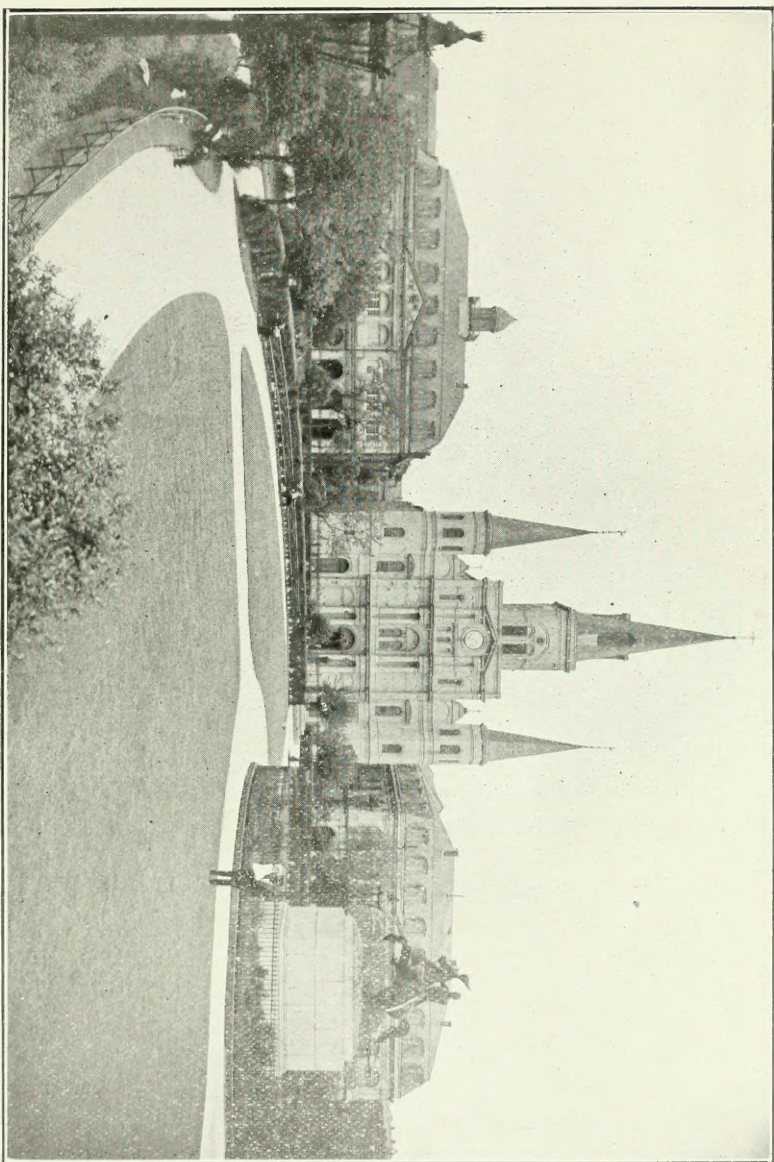
T. P. THOMPSON.....President
CRAWFORD H. ELLIS.....Vice President
GENERAL JOHN B. LEVERT.....Treasurer
ROBERT GLENK.....Secretary
WILLIAM B. THOMPSON, H. GIBBES MORGAN, JR.,
SAM BLUM, CHARLES JANVIER,
S. LOCKE BREAUX.

Ex-Officio Members.

LUTHER E. HALL.....Governor of Louisiana
MARTIN BEHRMAN.....Mayor of New Orleans
E. O. BRUNER....Commissioner of Agriculture and Immigration
WILLIAM R. DODSON....Director of State Experiment Stations

Curator,

ROBERT GLENK, B. S., Ph. C., in charge of La. State Museum



(1) JACKSON SQUARE, STATE MUSEUM BUILDINGS AND CATHEDRAL.

REPORT OF T. P. THOMPSON

President Board of Curators

To His Excellency, the Governor, and to the Members of the General Assembly of Louisiana:

GENTLEMEN: As president of the Board of Curators of the Louisiana State Museum, I have the honor to state that the members of the board, having at heart the best interests of the institution over which they preside, have, during the two years covered by this report, given careful consideration in their meetings and deliberations to the formulation of plans and policies designed for its upbuilding and development.

The results of the application of these policies of administration and management are shown in the detailed report of the Curator, who is in immediate charge of the conduct of the Museum.

The commission of the members of the board appointed by Governor Blanchard having expired in December, 1910, by limitation, Governor Sanders appointed the present membership on March 4, 1911. This board had its first session on April 3, 1911, and organized as follows: T. P. Thompson, president; Crawford H. Ellis, vice president; John B. Levert, treasurer, and Robert Glenk, secretary. The Curator was unanimously reappointed by the board.

It is with much sorrow and the sense of a genuine personal loss, that we record the death of Colonel Charles Schuler on April 1, 1911, Commissioner of Agriculture and Immigration and ex-officio member of the Board of Curators. Colonel Schuler has always taken keen interest in the welfare of the museum and appreciated the great possibilities of the institution as an aid in securing immigration and development for the State. As a member of the Louisiana Purchase Exposition Commission, he exerted his influence in behalf of the establishment and operation of the present State Museum from the exhibit and funds received from this commission prior to the incorporation of the Museum by the State.

The formal opening of the State Museum is scheduled to take place April 30, 1912, the occasion being the centennial celebra-

tion of the admission of Louisiana into the United States. This date is peculiarly appropriate, as all events connected with the admission of the State transpired within the walls of the Cabildo, now occupied by the History Department, and in the Place d'Armes, now Jackson Square, immediately in front.

A very elaborate program is being arranged and notable speakers of national and international repute have accepted the invitation to take part in the exercises.

The City Council of New Orleans was presented by the Board of Curators on February 21, 1911, with a portrait of Etienne de Bore, first Mayor of New Orleans under American domination.

Our exhibits in the Cabildo now cover 11,000 square feet, and over sixty showcases are required to hold them. The intrinsic value of these exhibits is easily \$200,000.

In the Presbytere, the Commercial and Natural History building, also facing Jackson Square, our exhibits now cover about 25,000 square feet of floor space. Here, in 210 show cases, is displayed a permanent exhibit of Louisiana's resources covering all agricultural and horticultural productions, the timber and mineral wealth, the birds, animals and fishes, insects, shells, fossils and soils and their application to the arts and manufactures; in fact, an epitome kept up to date, of every natural and industrial attraction offered by this rich Commonwealth to the seeker of information.

All this has been accomplished since the establishment of the State Museum in 1906 by the exercise of the most painstaking efforts, the most exacting economy and efficiency of management.

The regular appropriation of \$5,000 per year was barely sufficient for the maintenance of the Museum in the old quarters. Now, with two immense buildings to remodel, repair and to maintain, and with urgent need of more employees, more equipment, more material to carry out its aims and objects, and to make the institution a power for good, you can readily appreciate our embarrassment.

We will either go forward or go backward, as there can be no standing still, and this movement will be largely influenced by the attitude of the General Assembly at this juncture.

A record of nearly half a million of assets on a State investment of twenty-five thousand during five years of our corporate existence speaks for itself.

Aside from the development of this permanent exhibit of Louisiana resources, the museum has furnished and equipped more than ten state exhibits outside of Louisiana at various expositions and fairs, aided the campaign for the World's Fair at New Orleans and exhibited at the State Fair and on railroad demonstration cars.

Our limited means prevents us from carrying adequate insurance, from having sufficient guardianship, the ever-present fire hazard on account of wooden floors stares us in the face, and it handicaps us for lack of sewerage, modern facilities and adequate means of heating, all of which are due the contributors to the museum collections and the visiting public and in order to maintain the dignity of the State institution.

We would ask the State to set aside ten or fifteen thousand dollars per year for the support of this magnificent and comprehensive exhibit and for an exploitation of its resources such as California, Oregon, Washington, Colorado, Kansas, Nebraska, Canada, and many other states maintain to their decided advantage, now that we have the buildings, the organization, the foundations all laid and favorably located for the heavy tourist travel through New Orleans. A paltry sum, indeed, for the good to be accomplished. As a business investment no appropriation made by the State returns as much actual result in immediate assets—\$25,000 received, \$250,000 value in hand, also the advertising benefit, which cannot be shown in figures.

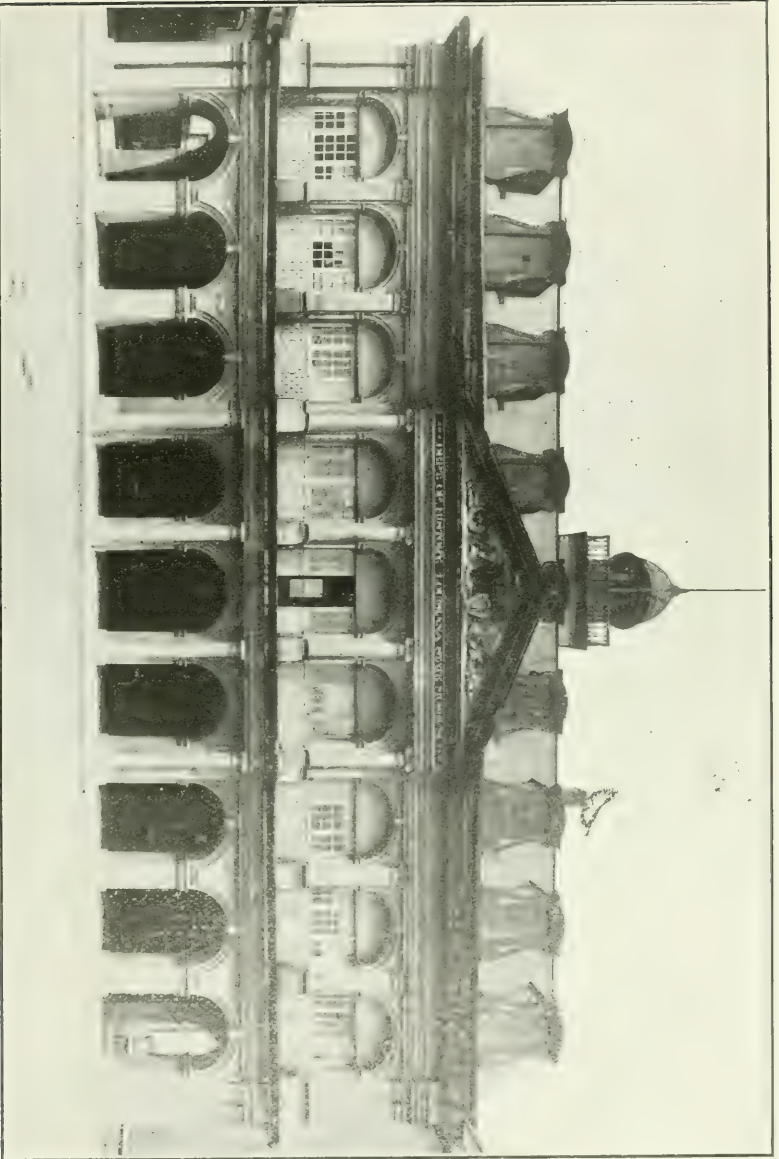
Besides the money value of the exhibits as stated above, the Museum possesses two historic buildings, Cabildo and Presbytere, facing the beautiful Jackson Square, which buildings have been dedicated for all time to the Board of Curators by the City Council in 1908 and in themselves represent a value of at least two hundred thousand dollars.

The public appreciation of the advantages of the State Museum is amply shown by the figures for the attendance given. The possibilities of the future will be largely determined by the attitude of our public-spirited citizens in coming to the aid of

the Board in carrying out the objects and aims of the Museum.

This institution has now proven its right to live, and to have the proper support of the State, and now that it is out of its experimental stage, it will require a commensurate handling; the returns for its proper support will be immediate and progressively increasing, and we submit for your consideration the care of a most worthy department of the State.

T. P. THOMPSON, President.



(11)

FRONT VIEW OF CABILDO (DEPARTMENT OF HISTORY).

REPORT OF ROBERT GLENK

Curator

The year 1911 marks a distinct era in the development and evolution of the Louisiana State Museum.

By ordinance of City Council the Museum assumed the custodianship of the Cabildo and Presbytere facing Jackson Square, and on January 1, 1911, the work of transferring 210 loads of exhibits to these buildings was completed at a total cost of \$326.00.

The heroic work of remodeling, repairing and adapting the rooms in these venerable buildings for exhibition purposes and the installation of exhibits began immediately, but much labor could have been spared if it had been possible to have gotten the buildings in shape for installation before crowding them with exhibits; however, as it was a matter of \$100 a month for rent, we were glad to take possession as soon as possible.

Few can realize what hard work it was removing the numerous little rooms and offices which were built into the Cabildo and Presbytere to fit them for court purposes and to restore the buildings to the original lines laid down by the builders in 1794 and 1811, respectively. True, too, the work could have been expedited had we had funds to employ a force of workmen.

In the two buildings, the museum has available 75,000 square feet of exhibition space, allowing plenty of room for expansion in all departments and giving ample opportunity for making this one of the most unique and attractive institutions of its kind in the country.

Three of the large halls in the Cabildo were restored and the exhibits of the department of history installed and opened to visitors on April 17, 1911.

The Transfer room in the Cabildo has been dedicated in perpetuity to the uses of the Louisiana Historical Society by the Council. This is the finest and largest hall in the building and has been equipped by the museum with a modern system of electric lighting. The walls and ceiling were plastered and painted and the sashes and wrought iron railings scraped and painted.

The wooden floor, however, is very rough and uneven, and, although it has been treated with stain and floor preparation, it needs to be renewed or, better still, a terrazo floor put in.

Although the Cabildo, with its three-foot thick brick walls, has gone through several conflagrations in its one hundred and eighteen years of existence, it is liable to be damaged by fire and its priceless exhibits forever destroyed unless steps are taken to make it incombustible.

Sixty-five showcases are required to protect the splendid collection of documents, letters, books, relics, maps, coins, medals, arms and weapons, Indian relics and art objects, sixty of which cases were made in the museum workshop in the last year.

The most noteworthy increase has come to us through the generous and patriotic contribution of Mr. Gaspar Cusachs, a historical and art collector of many years. His collection, listed under museum contributions, is very rich in local historical material and any museum in the country might feel proud to possess it. Among the other noteworthy collections deposited in the last twelve months are those of Mr. T. P. Thompson, H. Gibbes Morgan, Jr., Judge W. H. Seymour, Dr. Joseph Bauer, Dr. I. M. Cline, P. Chiriboga, Consul of Ecuador, and the Louisiana Historical Society.

The occasion of the celebration of the Statehood of Louisiana has been the means of bringing much valuable matter and many portraits for exhibition, representing the period of 1812.

The large portrait of Andrew Jackson and the Jefferson Davis Catafalque from the Battalion Washington Artillery; Lee and his generals from Judge Mathews; the large Slidell Picture from Dr. Cline, and the portraits of Don Almonester, Pere Antoine, Bishop Cardenas, lent by Rev. Scotti, are valued acquisitions.

The Natural History and Commercial Department was not opened until July 1st, as this building required the greatest amount of remodelling and repairs to fit it for museum purposes. The halls are now large, light and airy and only on dark days is artificial illumination required. The large hall in the north end of the building on the ground floor has been turned into the public lecture room. This room has a seating capacity of about 300 and

opens out on Jackson Square, having 4 doors and 3 large windows, admitting plenty of air and light. On the walls are now hung the splendid collection of 32 portraits of pioneers in the sugar industry of Louisiana. This room is the meeting place of the Louisiana Sugar Planters Association and the society has paid for the improvements and lighting installed in this room.

The room on the south side of the building is occupied by the office of the Secretary of the Division of Immigration, in conjunction with which, in exploiting Louisiana, the museum is **working hand in hand**.

Both the arcade and the courtyard in the Natural History Building have been restored to their original condition and the rooms extending out into them, built by the court, have been removed. The courtyard has been beautified by the addition of ten large palms and a number of other plants and trees and two Roman urns with ferns, contributed by the City Park and Audubon Park Commissions. The gallery and railings were also repaired and a number of cages for our collection of living reptiles built.

The Department of Natural History and Commerce has received a great many items from small contributors to the collections representing the flora and fauna of the State, but any noteworthy acquisitions in this department will be predicated upon the appropriation received from the coming General Assembly. Without a skilled taxidermist and preparator and collectors directly responsible to the museum, it will be impossible to get satisfactory exhibition materials or results, as it is beyond human power for the curator to do all that is needed in this most important department of the museum.

Fifteen halls are now installed in this building, with 235 show cases, seventy of which were built in the shop.

The installation of sewerage and modern sanitary facilities, as well as a means of heating and lighting the two buildings, are some of the very urgent needs of the museum.

Besides the regular work performed, the museum has furnished exhibits of Louisiana products at the New Orleans Board of Trade; Land Congress, Alexandria; Ohio Valley Exposition; Pittsburg Land Show, Illinois State Fair, Horticultural Congress,

Council Bluffs; Chicago Land Show, 1910-11; Louisiana State Fair, Illinois Central Railroad and exhibits at Lincoln, Neb.; Madison, Wis.; St. Paul, Minn., and Washington, D. C.

The first of the museum's contemplated series of monographs on the Natural History Survey of Louisiana was published in February, 1911, entitled *Leguminosae of Louisiana* and prepared by Prof. R. S. Cocks. Other monographs will follow as soon as the means is in sight to pay for publication.

As the museum is primarily an institution for the edification and entertainment of the public, the number of visitors is, no doubt, the best gauge of its popularity and usefulness in this respect.

Since the doors of the Cabildo have been opened to visitors, on April 17, 1911, to March 31st, 1912, 141,410 have seen the exhibits in this building alone. The figures for the natural history building are not available, as no data is kept.

Of course, the attendance for the first five months was not phenomenal, as the newspapers gave very little space to museum notices, and the public was not aware of the fact that the museum had moved. However, the attendance during December, January, February and March has been gratifying and the newspapers have given us several full page writeups. The greatest attendance was during the Mardi Gras week, when fully 20,000 crowded the museum halls. The average Sunday attendance has been 590.

It is the cherished idea of the curator to make the museum especially attractive to the school children and others interested in our natural products and in the study of Nature's phenomena around us. It is such a fertile field. We trust that the Legislators and friends of the museum will come to our aid and see to it that we are provided with at least some means to carry out this idea.

Our lecture series should also be revived, as we have every requirement but that of funds to make it a great success and of much usefulness.

The library of the Museum has also met with phenomenal growth in the past year; about 1,000 bound volumes have been added to the shelves and 3,000 pamphlets, entirely by gift and exchange. In the collection of books from Mr. Cusachs, are found

some of the most valuable sources of original information on Louisiana. The valuable scientific library of the late Dr. Joseph Jones, containing many books on archeology, ethnology, geology, paleontology, travels, agriculture, botany, medicine and many other early reports on Louisiana, has been donated to the museum by Mrs. Joseph Jones. The list, however, is too large to get ready for this report.

We are still lacking, though, in up to date reference and scientific books, which are so necessary to the curator, who is required to be posted in every department of human endeavor. The museum library contains much valuable and up to date data on Louisiana, on agriculture and kindred sciences and technology, and is made use of by many seekers for information.

In the appropriation bill passed by the Legislature of 1910, it was provided that the museum money should come out of the revenues of 1911 and 1912. In consequence of this, the museum was without funds for six months during 1910 and six months of 1911. To operate the museum it was necessary to borrow the money from the bank on which we were obliged to pay interest on overdrafts amounting to the sum of \$142.81; not an inconsiderable amount to lose on an appropriation of but five thousand dollars per year.

Appended herewith is a statement of the receipts and disbursements of the museum; a statement of the attendance and a list of contributors and accessions in the various departments and in the library.

ROBERT GLENK,
Curator

FINANCIAL STATEMENT.
 April 1, 1910, March 31, 1912.

Receipts.

1910—			
Balance in bank, April 1, 1910....	65.63		
Cash received State Treasurer....	1,666.68		
Refund	5.65		
	\$1,737.96	1,737.96	
1911—			
Cash received, State Treasurer...	4,583.30		
Cash refunded, various sources...	104.40		
	\$4,687.70	4,687.70	
1912—			
Cash received State Treasurer, Jan. to April 1, 1912.....	3,749.98		
Cash refunded.....	3.50		
	\$3,753.48	3,753.48	
Total receipts, April 1, 1910, to April 1, 1912....		10,179.14	
Total expenditures.....	\$ 10,836.57		
Total receipts.....	10,179.14		
Account overdrawn	\$ 657.43		



(111) SPANISH HAND-WROUGHT IRON GATE, CABILDO.

Disbursements.

April 1-Dec. 31, 1910.

1910—

Salaries and wages.....	1,859.50
Rent of hall.....	900.00
Publications	476.97
Office and maintenance expenses..	151.39
Freight, drayage and express.....	3.85
Repairs and improvements.....	4.65
Electric light bills.....	18.00
Telephone	31.00
Library	41.20
Car fares.....	.40
Art dept.....	275.00
History dept.....	83.25
Natural history dept.....	.20
Postage	28.60
Membership Amer. Assn. Museums.	3.00
Interest on overdrafts.....	46.71
Exhibit at La. State Fair.....	101.50
Moving to new quarters.....	256.38

 4281.60

Disbursements.

1911—	Jan. 1, 1911, to Dec. 31, 1911.	
Salaries and wages.....	\$ 2,877.50	
Rent	50.00	
Publications	121.85	
Office and maintenance expenses.....	311.69	
Freight, drayage and express.....	107.83	
Repairs and improvements.....	551.73	
Electric light bills.....	4.94	
Telephone	6.00	
Library.....	18.10	
Car fares	1.00	
Art department.....	172.00	
History department.....	152.00	
Natural history department.....	9.00	
Postage	18.94	
Membership American Association Mu- seums.....	3.00	
Interest on overdrafts.....	77.85	
Insurance	409.80	
	\$ 4,893.23	

Disbursements.

1912—	Jan. 1-March 31, 1912.	
Insurance premiums.....	\$ 308.00	
Repairs and improvements.....	157.33	
Salary and wages.....	761.00	
Office and maintenance expenses.....	28.30	
Electric light bills.....	5.65	
Telephone	22.00	
Postage	1.25	
Car fares	1.95	
Drayage and express.....	23.26	
Interest on overdrafts.....	18.25	
History department.....	247.75	
Natural history department.....	36.00	
Art department.....	37.00	
Library	14.00	
	\$ 1,661.74—	1,661.74
Total expenditures.....		\$10,836.57

Building Committee Fund.

Balance in bank January 1, 1911.....	\$	2,812.00
Repairs and improvements made, 1911.....		2,812.00

ATTENDANCE.

	1910.	1911.	1912.
January.....	6,800	14,000
February	7,000	*2,000	31,920
March.....	7,000	21,140
April	5,600	†3,600	
May.....	5,000	7,840	
June	4,500	5,320	
July.....	4,100	5,040	
August	3,900	5,550	
September.....	4,100	9,450	
October	4,000	9,000	
November.....	4,800	12,600	
December	2,800	13,950	
Totals.....	59,600	74,350	67,060

Statement of Attendance Since Establishment of Museum.

May 5, 1905, to April 30, 1906.....	67,000
May 1, 1906, to April 30, 1907.....	57,000
May 1, 1907, to April 30, 1908.....	62,000
May 1, 1908, to May 30, 1909.....	89,000
May 1, 1909, to December 31, 1909.....	34,000
January 1, 1910, to December 15, 1910.....	59,600
April 17, 1911, to December 31, 1911.....	74,350
Jan. 1, 1912, to March 31, 1912.....	67,060
Total number of visitors.....	510,010

Sunday Attendance.

1911—Three Sundays, December.....	896
1912—Four Sundays in January.....	1,666
Four Sundays in February.....	3,591
Five Sundays in March.....	3,283
Total.....	9,436

*One week. †Two weeks.

Visitors to Museum in New Quarters, Jackson Square.

Number in 1911.....	74,350
Number in three months of 1912.....	67,060
<hr/>	
Total.....	141,410

Museum was closed from December 15, 1910, to April 17, 1911, on account of moving to new quarters.

INVENTORY OF EXHIBITS.

Cabildo.

ARCHEOLOGY.

Louisiana.....	1,015
Foreign.....	176

ETHNOLOGY.

Louisiana.....	112
Foreign.....	190

HISTORY.

Documents, letters, relics, newspapers.....	1,752
Arms and weapons.....	140
Old and rare maps and plans.....	115
Coins and medals, paper money.....	861

ART.

Sculpture.....	38
Water colors.....	16
Engravings, lithographs, crayons.....	170
Ivory miniatures.....	35
Oil paintings.....	171
Pottery, plate and miscellaneous art objects.....	220

INVENTORY OF EXHIBITS.

Natural History and Commerce Building.

EDUCATION.

Exhibits of work of schools and colleges.....	600
---	-----

GEOLOGY.

Minerals.....	1,800
Rocks.....	120
Soils.....	100
Relief maps and models.....	20

FOSSILS.

Invertebrates	700
Vertebrates.....	200
Plants	45

BOTANY.

Cryptogams.....	150
Phanerogams..	350
Forestry specimens.....	650
Agriculture.....	2,100
Horticulture	210

ZOOLOGY.

Shells	2,500
Insects.....	2,487
Other invertebrates.....	100
Fishes....	350
Batrachians.....	50
Reptiles.....	150
Birds, eggs and nests.....	950
Mammals	110

COMMERCIAL.

Manufactures of Louisiana.....	350
--------------------------------	-----

LIBRARY.

Bound volumes.....	2,100
Pamphlets	6,000
Lantern slides.....	100
Photographs	300

Total number of items recorded..... 27,603

LIST OF ADDITIONS TO THE COLLECTIONS OF THE MUSEUM.

Exhibits Installed in the Cabildo.

ARCHEOLOGY.

Rich as is the State in Indian Mounds and in relics of the Mound Builders, this department has made very little progress in the last two years. Mr. Clarence B. Moore of Philadelphia has headed an exploring party from the Academy of Natural

Sciences two years ago, and it is understood has gathered quite a collection of pottery and prehistoric remains in the north-eastern part of Louisiana, but there is still lots of valuable material to be secured. It is to be regretted that the museum has not been able to send some one in the field to search for specimens for our museum, and it is earnestly hoped that a small fund may be available in the near future to prosecute an energetic search for the relics of the prehistoric inhabitants of our State.

Dr. Joseph Bauer:

Burnt clay pipe, incised ornamentation, Terrebonne, La.

P. Chiriboga, Ecuador:

7 pieces Inca pottery.

1 Inca idol.

1 whistle made of fossil shell, Inca excavations.

3 stone axes.

1 celt.

2 ceremonial axes.

1 rubbing stone.

Gaspar Cusachs:

Indian celt, St. Tammany Parish.

Dr. H. A. Greenwood, Ancon, Canal Zone:

23 pieces Chiriqui pottery.

2 pieces Inca pottery.

5 clay ornaments, Chiriqui.

5 stone axes.

51 arrow points.

Archibald Healy:

40 pieces pottery fragments, Cabo Rojo, Porto Rico.

Dr. W. Laurence Stevenson:

12 arrow points, Louisiana.

1 stone axe, Louisiana, groved.

W. C. Pickens, Greensboro, Ala.:

7 arrow points.

1 rubbing stone for pigments.

1 flint knife.

- 2 pottery fragments.
- 2 spear heads.
- 3 game stones.
- 4 rubbing stones.
- 1 celt.
- 3 stones with cavity.
- 3 discoidals.
- 4 mortars.
- 2 ceremonial stones.

ETHNOLOGY.

Marc Antony:

- Antelope leather pouch.
- Leather-covered talisman.
- Water bottle covered with red leather antelope skin,
from West Coast of Africa.

Gaspar Cusachs:

- Mexican pottery, unglazed.
- Mexican metate made of lava.
- Curious skate.

Robert Glenk:

- Choctaw Indian elbow basket.

J. Glodt, Manila, through J. L. Knoepfler:

- Thirty-five photos of Negritos.

Dr. W. Laurence Stevenson:

- Alaska Indian totem pole.
- Money box of Philippine native wood.
- Relics of Congo tribes of Africa: 2 poisoned arrows;
basket of rattan; raffia basket; fiber cap; 2 leather
charms; 2 curious carved wood fetishes; human fig-
ure; wood-handled dagger; 4 slate scrapers; clay
pipe; vase.

Mrs. W. C. Stubbs:

- Two wax figurines of local types, pralines and vegetable
vendor.

Mrs. F. Gayoso Tennent:

Sewing basket, Houma Indian.

Edward Foster:

Pocket bandage issued to Spanish soldiers, 1899.

T. P. Thompson:

Leather canoe buffer.

Indian rubbing stone.

Indian stone ax.

Indian belt.

Indian tomahawk ceremonial pipe, English.

Shell of exploded cartridge. Spanish-American War.

Relics of Geronimo, famous Indian chief: sword, with belt; iron-pointed arrows in quiver; bit and bridle of rope; bow; bayonet; knapsack; epaulettes; hand-cuffs; canteen.

P. Chiriboga, Ecuador:

Two bows and arrows, Araucanos Indians, Chili.

Kapa cloth, decorated, Araucanos Indians.

Necklace made of rectangular pieces of bone, Chili.

Necklace made of palm nuts and beads, Chili.

Ceremonial shield, copper, shape of a sun, Chili.

HISTORY OF THE UNITED STATES AND OF LOUISIANA.

Charles Abadie:

Old Bible used for administering oaths in Civil Courts when first domiciled in present State Museum building.

Wooden ornament taken from balustrade on St. Louis Cathedral, 1820.

Coleman E. Adler:

Hall clock, made in 1850 by J. Fournier, New Orleans, maker of St. Louis Cathedral clock.

Miss Mary Ames:

Portraits by Lion, 1853, of Alexander Phillips, C. W. Cammack, J. W. Lewis, D. O. Hincks, H. M. Wright, Alfred Hennen, W. Fellows, R. Geddes, Wm. Freret, W. G. Kendall, N. Folger, Newton Richards, J. H. Beard.

(14)

VIEW IN TRANSFER ROOM DEPARTMENT OF HISTORY.



Mrs. Virges Armistes :

Pocket medicine scale and weights, 1850.

Battalion Washington Artillery, through Major Allison Owen :

Catafalque used at the funeral of Jefferson Davis, President of the Confederate States of America.

Portrait of General Andrew Jackson.

Harry E. Baldwin :

Iron spur found on mission trail between Natchitoches and Nacodoches, 1800.

Paper cutter made of wood from desk of Admiral Cervera.

Paper weight made of metal from Viscaya and O'Quendo, Spanish warships.

Two framed legends to accompany pistols.

Dr. Joseph Bauer :

Letter, John J. Audubon to Mrs. F. Rozier, Shippingport, August 15, 1812.

Letter, John J. Audubon to Mrs. Rozier, Louisville, November 2, 1811.

Portrait in oil, Governor H. S. Thibodaux, 1824.

Portrait in oil, Mrs. Thibodaux, 1824.

Portrait in oil, Pere Antoine, 1820.

View of Place D'Armes in 1836. printed in New Orleans Newspaper, *Moniteur de la Louisiane*, bound file, August, 1802, to November, 1803.

Journal, fourth Legislature of Louisiana. 1820; Senate.

Autograph of Governor Thibodaux. Bound volume.

New Orleans Characters, by Leon J. Fremaux, 1876.

New Orleans and Environs, Norman, 1845. Bound volume.

Stirrups, carved wood, used by Col. Michel Fortier, 1815.

French lock and keys, Madame Lalaurie's residence.

Spanish door knocker.

Curious padlock and key, Pere Antoine's gate.

Pere Antoine's palm tree, section cut by Dr. Bauer.

Souvenirs collected by Dr. H. B. Teague, Aiken, S. C. :

Piece of the timber of the United States war vessel "Canandaigua," 1861-65.

Piece of the coat of a British soldier captured near Philadelphia during Revolutionary War.

- Marble from the tomb of Pope Pius IX.
 Rock from Blarney Castle, Ireland; taken from near the
 "Blarney Stone."
 Crepe worn at the Yorktown Centennial in mourning for
 President Garfield.
 Piece of the timber of the celebrated Confederate vessel
 "Merrimac."
 Piece of note paper made in the Confederacy during war
 of 1861-65.
 Splinters of the flagstaff at Fort Sumter.
 Mummy cloth from Egypt.
 Pieces of the "Charter Oak" of Hartford, Conn.
 A piece of the "Old Elm" from Boston Common.
 Insulated fuse used at Fort Monroe for exploding torpedo
 during Civil War.
 Marble from the Catacombs of Rome, Italy.
 Piece of the United States war vessel "The Galena,"
 built to fight the batteries on James River, near Rich-
 mond, 1861-65.

John Boffato :

- Newspaper, *Gazetta di Venezia*, 1848.
 Postage stamps, various nations.

Mrs. J. D. Bonneval :

- United States flags of silk, period of Revolution, series
 of six.
 Two United States flags, 1812.
 Louisiana State flag, silk.

Sam Blum :

- Fragment of brick, old fort at Jamestown, Va.
 Hebrew scroll on satin.
 Horseshoe made of iron from Merrimac.
 Buckle and strap, Civil War.
 Souvenir button, U. C. V.

Henri J. Brennan :

- Model of a full rigged barkentine, 1875.

J. W. Brewer :

- Candlestick, brass, antique.
- Candle-holder, brass.
- Old candle mould.
- Door-knocker, bronze.
- Two tucking combs, old style.

Charles Claremont, Alexandria :

- Portrait of Governor Joseph Walker, 1850-53.

Dr. I. M. Cline :

- Certificate of Alfred Moulton as active fireman, 1850.

P. Chiriboga, Ecuador :

- Document, signature of Simon Bolivar, Liberator of South America.
- Document, signature of General Antonio Jose de Sucre, Grand Marshal of Ayacucho.
- Document, signature of Carlos III, King of Spain.
- Patent of Nobility, Spain, fifteenth century; illuminated and hand-lettered on vellum, handsomely executed coat of arms; embossed leather covers.

Peter Claus :

- Bullet mould found in excavation at Roman and Allen Sts.

Gaspar Cusachs :

- Civil Code, O'Reilly, 1767.
- Code Noir, 1761.
- Code Noir, 1742.
- Code Noir, 1782.
- Decree of King confirming grants to India Company, 1725.
- Decree of payment of debts of India Company, 1731.
- Decree of payment of debts of Louisiana, 1765.
- Decree of payment of debts of Louisiana, 1761.
- Decree of retrocession of Louisiana from India Co., 1731.
- Decree regulating shipping in New Orleans, 1748.
- Detail of Guards, January 19. 1815.
- Diary of Bernardo de Galvez, Madrid.
- Examination of Batture Case, M. Thierry, 1808.
- Letter, Estevan Miro to Davenport, September, 1785.

- Letter, General D. B. Morgan to General Jackson, 1811.
- Letter, Stephen Hopkins to General Morgan, January 15, 1815.
- Letter, General Morgan to Major Reynolds, January 4, 1815.
- Letter, M. Stanley to General Morgan, December 22, 1814.
- Letter, General Temple to General Morgan, 1815.
- Letters Patent or Commission signed by Napoleon to Michel Murat.
- Letters Patent, Jesuits, 1763.
- Letters Patent, Jesuits; 1764.
- Letter-book, Charleston Department, 1836.
- Letter, A. Guerison to Governor O. Moore, June, 7, 1861.
- Letter, John Callier to Orsona, Commandant of Mobile, 1804.
- Letter, Colonel Philip Caldwell to General David B. Morgan, January 1, 1815.
- Letter, Daniel Clark to W. S. Hamilton, November 12, 1811.
- Letter, Major General William Carroll to General David B. Morgan, January 20, 1815.
- Letter, Samuel Gordon to General David B. Morgan, Fort St. Leon, January, 1819.
- Letter, Major James Gordon to General David B. Morgan, Fort St. Leon, January 12, 1815.
- "Short letter to member of Congress concerning Territory of Orleans," by Brown, Washington, 1806.
- Receipt for clothing from General Morgan's quartermaster, February 15, 1815.
- "Recueil de documents historique a la Louisiane," 2 Epoque, Ier cahier, 1697-1721.
- "Reglements pour les paquebots," 1786.
- Reply by inhabitants to circular letter of Martin Navaro, Commandant of Louisiana, August 29, 1780.
- Report of strength of troops at Camp Morgan, January 17, 1815.
- Report of the committee on free markets of New Orleans, 1862.

- Proclamation, "Aux habitants sucriers." by Pauvet, New Orleans, February 1, 1851.
- Proclamation of Governor of Kentucky for public Thanksgiving, 1866.
- Proclamation of Governor of Massachusetts for public Thanksgiving, 1866.
- Proclamation of Governor of Nevada in regard to death of President Lincoln.
- Proclamation of President relating to General Butler.
- Proclamation signed by Thomas Jefferson, Louisiana Purchase.
- Programme of Louisiana Purchase Celebration, 1903.
- Prosecution against Jesuits of Louisiana, 1763.
- Petition of Pauline Toussant, f. w. of c., for emancipation of sons, January 28, 1850.
- Ordinance establishing slave patrols for Parish of St. Landry, Opelousas, 1863.
- Emancipation papers of Marie Antoinette, 1847.
- Emancipation act executed by Francis Tamar, f. m. of c., in 1821.
- Slave emancipation notice, 1827.
- Act of sale of negro man by Thomas Pue of Maryland, 1857.
- Bill of sale of negro man, April 2, 1857.
- Slave mortgage and certificate, 1851.
- Slave mortgage note, 1850.
- Act of sale of Concession Plantation, 1859.
- Act of sale of Isle a Cayou by the Billiot Sons, December 27, 1833.
- Bill of sale to Proctor family, signed by Beauregard, 1856.
- Bill of sale certified to by Miro, signed by Nunez, Military Treasurer.
- Bayou Nez-pique concession, signed by Governor Galvez, August 23, 1781.
- Land certificate signed by President Andrew Jackson.
- Land certificate signed by President Martin Van Buren.
- Land certificate signed by President Millard Fillmore.
- Land certificate signed by President James Madison.
- Land certificate signed by President John Tyler.

- Land sale by Delahoussaye, approved by Governor Gayoso de Lemos, 1798.
- Le Blue claim to Timballier Island, signed by Carondelet, 1793.
- Deville's application for Attakapas land, approved by d'Abadie, 1764.
- Report of the Secretary of the Treasury on the United States Coast Survey, Washington, 1811.
- Report of the strength of His Majesty's 85th Infantry, 1815.
- Requisition for stationery for General Morgan's command, 1815.
- Notice sent to General Morgan of furlough granted Colonel DeJean by Governor Claiborne.
- General orders issued to Federal troops in Alexandria, La., 1864.
- Division orders from General Andrew Jackson, July 3, 1815.
- Oration on the cession of Louisiana, by David Ramsey; Young, Charleston, 1804.
- Orders issued by David B. Morgan to Colonel Declouet, December 24, 1814.
- Order of payment to John Ralston for attendance at Philadelphia Constitutional Convention, 1779.
- Orders issued to David B. Morgan, December 23, 1814.
- Order to William Goforth to repair to camp, January 19, 1815, General David B. Morgan, commanding.
- Ordinance establishing Louisiana State Bank, 1804.
- Petition to Major De Favrait, signed by Captain Hatch, January 14, 1815.
- Passport signed by Casa-Calvo.
- Passport signed by Manuel Gayoso de Lemos.
- Passport signed by Mayor August Macarty, 1817.
- Passport signed by Governor O'Reilly.
- Message of Governor Kerlerec, February 9, 1793.
- Order issued by Governor O'Reilly.
- Baptismal certificate, signed by Antonio de Sedella and certified to by Governor W. C. C. Claiborne, May, 1810.
- A true record of General Butler.

- General Butler's action in the salary grab.
 Cartoon on Butler—Half a loaf better than none.
 Is Butler the soldiers' friend?
 Denial of Butler's statements by Generals Grant, Banks and Gordon.
 Woman's oath of fidelity, Department of the Gulf, 1862.
 Bill for attendance at Constitutional Convention, Philadelphia, 1787.
 Pay memorandum, January 16, 1815; Captain Dubricht's company.
 Pension certificate, Ursulines, signed by Salmon, 1740.
 Ticket, Grande Lotterie de l'Association du Bazar.
 Washington's Farewell Address, copy.
 Inaugural address of Andrew Jackson, President of the United States.
 Collection of American Theatre programs, 1826-37.
 Collection of war-time poems.
 Collection of political badges.
 Fifteen carnival ball invitations.
 Invitation to celebration of Louisiana Purchase Centennial, New Orleans, 1903.
 Invitation to opening of Colonial Museum, 1903.
 Invitation to Historical Ball, 1903.
 Invitation to King's Ball given by Mr. Capdeville and Miss Comaux, 1857.
 Invitation to reception of President of United States, New Orleans.
 Design for Louisiana Purchase Centennial program.
 Ball ticket, Olympian Theatre, New York, 1820.
 Plantation ticket good for 50 cents, 1860.
 Beauregard's call for volunteers, 1862.
 Hood's call for volunteers for Cuba, 1898.
 Poster, Louisiana Purchase Centennial, 1903.
 Nomination of Municipal Council, Laussat, 1803.
 Notice—Grimes-Workman controversy.
 Poster announcing succession sale in Faubourg St. Mary.
 Application for Isle a Cayou, signed by Governor Miro, 1787.

Statement of Paris and Desuet, Isle a Cayou matter,
January 2, 1833.

Paris and Desuet papers, signatures of Bermudez and
Governor A. B. Roman.

Photographs and Prints:

Columbus taking possession of Guanahani.

Fulton's monster on Hudson River.

Corvette.

Execution of Mrs. Surrat.

Flatboats on Mississippi River.

French inhabitants in country of Illinois.

Launching of a vessel, 1780.

Magnolia blossom.

North side Canal Street, 1860.

Galley at anchor.

Galley on her oars.

Cabildo.

Lieutenant Andibers.

John J. Audubon.

General Beauregard.

Judge Bullard.

Governor W. C. C. Claiborne.

Governor Derbigny.

Design for a monument, September 14, 1874.

French Market.

House—Madam John's legacy.

Andrew Jackson.

Jackson Square.

Governor Johnson.

Governor Kerlerec.

Landing of Ursulines.

Jacques Marquette.

Judge Martin.

Etienne Mazureau.

Pere Antoine.

Filling in Canal Street, 1879; portable railway.

Governor A. B. Roman.

Slave quarters.

State Capitol.



(A)

GASPAR CUSACH'S HISTORICAL COLLECTION.

Bend of the river.
 Henry Vignaud.
 Governor J. Villere.
 President Franklin Pierce.
 F. Henst.
 Views, Louisiana Purchase Centennial celebration in New Orleans.
 View, indigo culture.
 View, sugar industry.
 View, tobacco growing.
 View, turtle fishing.
 View, shipping in New Orleans, 1840.
 St. Louis Street during Radical rule in New Orleans.
 Fort of Natchez.
 New Orleans after a snowfall, 1895.
 San Francisco, 1856.
 Slump in cotton, 1851.
 Second draught of a first rate.
 New Orleans, 1840.
 Rapids of the Ohio.
 Ecores at Margot.
 Bluffs on Mississippi River.
 Nogales.

Newspapers, New Orleans and Louisiana:

"Daily Advocate," Baton Rouge, April 20, 1900.
 "Daily City Item," New Orleans, October 22, 1886.
 "Daily Citizen," July 2, 1863.
 "Daily Delta," November 8, 1860.
 "Edenton Intelligencer," June 14, 1788.
 "Father Columbia's Paper," New York State, September 15, 1883.
 "Galveston Commercial," May 31, 1855.
 "Harlequin," November 29, 1899.
 "Headlight," September 21, 1805.
 "Home Trading Stamp Journal," 1902.
 "Johnny on the Spot," 1902.
 "Journal de tout le monde," February 24, 1848.
 "L'Abeille," January 22, 1829.
 "L'Abeille de la Nouvelle Orleans," August 18, 1863.

- "La Creole," December 31, 1837.
 "L'Ami des lois," May, 1814.
 "L'Ane," July 16, 1835.
 "La Patria," December 21, 1847.
 "La Reforme," February 12, 1846.
 "La Renaissance Louisianaise," June 15, 1862.
 "La Union," January 5, 1851.
 "L'Avenir," May 26, 1867.
 "Le Bon Sens," New Orleans, August 14, 1842.
 "Le Courrier Francais," April 22, 1864 (extra).
 "Le Corsaire Louisianais," February 8, 1834.
 "L'Ecureuil," November 19, 1837.
 "Le Figaro," July 3, 1838.
 "Le Franc parleur," July 2, 1835.
 "Le Grelot," July 5, 1846.
 "Le Grelot," July 16, 1846.
 "L'Independant," New Orleans, October 17, 1835.
 "LeLouisianais State Rights," February 26, 1860.
 "Le Meschacebe," St. Jean Baptiste, April 23, 1904.
 "Le Meschacebe," St. Jean Baptiste, December 16, 1905.
 "Le Messenger," Parish of St. James, December 4, 1846.
 "Le Messenger," Parish of St. James, September 22, 1849.
 "Le Moniteur," du Sud, August 5, 1849.
 "Le Moqueur," September 10, 1837.
 "Le Moustique," September 14, 1892.
 "Le National," October 24, 1856.
 "L'Orleanais," January 1, 1850.
 "Le Patriot," May 27, 1838.
 "Le Renard Democrat," June 26, 1834.
 "Le Reveil des Peuples," October 24, 1852.
 "Le Sud," August 14, 1873.
 "Le Trait d'Union," 1852.
 "L'Union," May 12, 1864.
 "Le vrai Republicaine," December 28, 1837.
 "Martin's North Carolina Gazette," Newbern, July 11,
 1787.
 "Martin's North Carolina Gazette," Newbern, July 19,
 1787.
 "Moniteur de la Louisiane," February 28, 1807.

- "New Orleans Daily Crescent," October 15, 1856.
 "New Orleans Republican," May 10, 1873.
 "Norwich Packet," March, 1793.
 "The Advance," July 2, 1893.
 "The Independent Citizen."
 "The People," June 25, 1904.
 "The Truth," Lawrence, Mass., November 7, 1876.
 "United Labor Journal," April 29, 1905.
 "Orleans Gazette," March 5, 1807.
 "Picayune," October 21, 1861.
 "Revue Icarienne," St. Louis, October 15, 1858.
 "Southern Druid," May 21, 1898.
 "Southwestern Gazette," March 25, 1903.
 "St. Bernard Voice," December 8, 1900.

Bound Volumes:

- Birds of America, J. J. Audubon, small edition, Philadelphia, 1840,
 American Ornithology, 1825, Charles Bonaparte.
 American Ornithology, 1808, J. Wilson.
 Herbal de Louisiane, three volumes.
 Flora of Louisiana, 1817, F. Rafinesque.
 Address on Batture Case, E. Livingston, New Orleans, 1808.
 Acts of Legislative Council of Territory of Orleans, 1805.
 Historical Memoir of War in West Florida and Louisiana, 1816, Major L. Latour.
 Atlas to Historical Memoir of War, 1816, L. Latour.
 History of French Dominion in North and South America, Jefferys, 1760.
 History of American Indians, Adair Lilly, 1775.
 Memoir de Bernard de Marigny, 1822.
 Memoirs of John Kerr, 1727.
 Memorandum of Crozat and Island of Orleans.
 Message of the President Relative to Louisiana, 1803.
 Account of Louisiana Rendered to Mr. Jefferson, 1804.
 Account of Louisiana Laid Before Congress, 1803.
 Description of Louisiana, by Hennepin, Paris, 1683.
 Etat present de la Louisiane, Champigny, Amsterdam, 1781.

- Etchings from Camera Lucida in North America, Basil Hall, 1829.
- Present State of European Settlements on Mississippi, Pittman, 1770.
- View of the Political and Civil Situation of Louisiana, 1804.
- Journal of Last Voyage of La Salle, Joutel, London, 1714.
- Voyage de la Louisiane, Rev. S. J. Laval, 1727.
- Discovery and Settlement of Mississippi River, Monette, 1846.
- Noticias Americanas, Antonio de Ulloa, 1772.
- Account of Louisiana, Duane, 1804.
- American Pioneer, Chillicothe, Ohio, 1842.
- Premiere Session de la Premiere Legislature de la Louisiane, Thierry, New Orleans, 1812.
- Imperial Atlas, Laurie, 1807.
- Introduction de la Geographie, De Fer, 1716.
- By-Laws of the Order of Cincinnati and Rules of the New Jersey State Society, 1808 (autograph copy).
- Paxton's New Orleans Directory, 1822.
- Commerce de la Louisiane, Marseilles, 1760.
- Coton, Tabac, Cacao et Indigo. Carret ou Ecaille de Torte.
- Traite General du Commerce de l'Amerique, 1761.
- Portraits of Louisiana Celebrities by Lion, 1851.

Relics:

- Old powder horn, silver mounted.
- Model of solar system from College of Orleans, 1812.
- Globe from College of Orleans, 1812.
- Iron slave bar.
- Twenty Spanish and French locks and keys.
- Twelve Colonial hinges, hand made of iron.
- Ten Colonial hardware, bolts, etc.
- Lock from old United States mail box.
- Colonial house bell.
- Police lantern, 1812.
- Section cypress wood water pipe, from Chartres and Toulouse streets, 1812.
- Carpenter's brace, made of wood.

George G. Earl:



Section of cypress water pipe laid in New Orleans in 1812 by Latrobe.

J. N. Edwards:

United States postage stamp, 10 cents, issue of 1849.

Two United States postage stamps, 5 cents, issue of 1849.

Mrs. B. R. Forman:

Newspapers—Ulster County Gazette, January 4, 1800.

Missouri Gazette, October 4, 1809.

Mrs. William A. Freret, Jr.:

Embroidered scarf sent by James Monroe, United States Ambassador to France, to Mrs. James Madison, 1803.

Mrs. Henry M. Gill:

New Orleans Carnival invitations, souvenirs, dance cards, etc., forming nearly a complete collection from all various Carnival organizations from 1857 to 1912.

Robert Glenk:

Two green glass vials, antique.

Set antique amber jewelry.

Silver needle case, antique.

Six silhouette pictures, 1830-40.

Antique belt buckle, mother of pearl.

Spectacles and case, antique.

Draft on National Park Bank, New York, by State National Bank, New Orleans, signed L. A. Wiltz.

Ballot, 4th ward, election 1891, S. D. McEnery for Governor; and vote to submit lottery revenue amendment to primary.

W. O. Hart:

Chronological list of sheriffs of Orleans Parish, 1815-1911.

Roster of Dreux-Rightor Louisiana Battalion, 1861.

Newspaper, Philadelphia North American, April 17, 1906, account of Ben Franklin.

Confederate postage stamp, 5 cents, from Mrs. E. W. Gray, Roanoke, Va.

Gallery of portraits of judges and lawyers of New Orleans, 1900.

Photograph, Constitutional Convention, Mechanics' Institute, 1898.

Newspaper clipping, historical facts, history of Mississippi.

Autograph fac-similes, prominent men Southern Confederacy.

A. D. Hofeline:

Section of cypress water pipe laid by Latrobe in 1812, New Orleans.

Wood stopper.

Metal connection.

Henry Jacobs:

Letter, Admiral W. S. Schley to H. Jacobs in reply to invitation to address General Assembly of Louisiana, 1899.

John S. Kendall:

Photographs:

Picayune building.

Colonel J. W. Breedlove.

General James Winchester.

George W. Kendall.

Dr. A. J. Witherspoon.

Louisiana Historical Society:

Commission, signed by Acting Governor Jacques Dupre, to Charles Cuvellier, May, 1830. Gift of A. Avel.

Badges used at unveiling of Henry Clay monument, 1860 and 1910.

Ship's ornament, taken from sloop-of-war "Le General La Touche Treville," France, 1803. Gift of Mrs. George Denegre.

Copper box from cornerstone of Mechanics' Institute, placed 1857, opened 1910, containing silver and copper coins, newspapers, names of officers and other interesting relics of that date. Gift of Theo. Grunewald, through W. O. Hart.

Photograph of document signed by Carondelet.

Photograph of Jean Baptiste Prudhomme.

List of portraits—*art department*.

H. Gibbes Morgan, Jr.:

Certificate, David Hickey's admission to Masonic Lodge in 1776.

Order of payment made under George III, England, April, 1774.

- Ordinance of Charles IV of Spain respecting wills, 1792.
 Proclamation, Manuel Gayoso de Lemos, 1793.
 Petition, Wade Hampton to James Read, Speaker House
 of Representatives, South Carolina, December 11, 1792.
 Order of President Lincoln recognizing H. Frellsen as
 Danish Consul, November 8, 1864.
 Commission, Robert C. Wood, signed by Andrew Jackson,
 July 4, 1836.
 Commission, D'Argilleeres and Courgereine, signed by
 Louis XIV.
 Commision to sail the White Oak, signed by George III,
 England, 1778.
 Letters patent issued by President Madison, 1813.
 Regulations to be observed by syndics, signed by Vincent
 Folch, 1804.
 General orders to Philip Hickey, November 25, 1814.
 Division orders to Colonel Hickey by General Philomen
 Thomas, December 22, 1814.
 Battalion orders to Colonel Hickey, December 23, 1814.
 Regimental orders to Colonel McArthur by Colonel Hickey,
 December 24, 1814.
 Division orders to Colonel Hickey, Baton Rouge, Decem-
 ber 24, 1814.
 Military orders to Colonel Hickey by General A. Jackson,
 December 28, 1814.
 Military orders to Colonel Hickey, April 10, 1815.
 Deed of property to Daniel Hickey by Mumford Brown,
 April 2, 1776.
 Act of sale of property to F. De Belisle by M. De Macarty,
 February 23, 1762.
 Indenture of land sold to Patrick Morgan by Elias Dun-
 ford, 1774.
 Bill of lading, brig Norfolk, bound from St. Domingo to
 Baltimore, 1800.
 Bill of sale of negro girl by John Mills, May 17, 1815.
 Confederate bond for \$100, August 19, 1861.
 London Chronicle, 1758.
 Fac-simile signature to document of Benedict Arnold.
 Signature, Andrew Jackson.

- Collection of 14 theatre programs. Camp Street Theatre, 1827-39.
- Collection of theatre programs. St. Charles Theatre. 1837.
- Letter, Marquis de Lafayette to U. S. Minister Murray, August 21, 1799.
- Letter, John J. Audubon to Robert Havell, December 16, 1829.
- Letter, John J. Audubon to Mrs. E. P. Daz.
- Letter, John J. Audubon to Charles Hosmer, February 20, 1841.
- Letter, Baron de Carondelet, 1776.
- Letter, J. P. Caldwell, Jan. 17, 1836.
- Letter, Thaddeus Mayhew to Mrs. Mayhew, January 26, 1815.
- Letter, Henry Clay to Thomas Gibbes Morgan, New Orleans, January 30, 1846.
- Letter, Louis Philippe, Duc d'Orleans, September 12, 1828.
- Letter, DeMarbois to Elbrique Gervy, 1781.
- Letter, Count deMaurepas to M. Mandeville, June 26, 1741.
- Letter, Count de Lallemande, Paris, June 6, 1790.
- Letter, General James Wilkinson to Major F. L. Claiborne, January, 1804.
- Letter, Reverdy Johnson to I. Meredith, July 24, 1834.
- Letter, Governor Johnson to Col. Philip Hickey, March 15, 1825.
- Letter, Governor Charles de Grand Pre to Syndic Philip Hickey, October, 1806.
- Letter, Governor Charles de Grand Pre to Syndic Philip Hickey, 1804.
- Letter, General Philemon Thomas to Colonel Hickey, December 24, 1814.
- Letter, Colonel Hickey to General Philemon Thomas, January 25, 1815.
- Letter, Benjamin Morgan to Colonel Hickey, September 14, 1812.

Irion Nelken, Natchitoches:

Button made of old coin, initials "U. S.," found at Natchitoches.



Achille Perretti:

- 3 six-pounder cannon balls.
- 35 hand-made nails.
- 2 hand-made bolts.
- 2 hand-made spikes. found on site of old Spanish Cal-abozo.

Baptiste Pier:

Newspaper, *Courier de la Louisiane*, June 5, 1853.

Mrs. S. E. Redfern:

Link of chain stretched across Mississippi River at Fort Jackson. 1861. to prevent passage of Federal war vessels.

Bolt from prison door at Fort Jackson, La.

Judge William H. Seymour, Algiers:

Certificate of baptism, signed by Antonio de Sedella (Pere Antoine), September 13, 1824.

Certificate, signed by Governor A. B. Roman, January 14, 1833.

Certificate, signed by Governor Isaac Johnson, August 19, 1848.

Commission of B. Montreuil, signed by Governor Henry Johnson, 1825.

Commission of A. C. Bony, signed by Napoleon Bonaparte, October 25, 1804.

Commission of David B. Morgan, signed by Governor W. C. C. Claiborne, September, 1805.

Commission of Louis Lombard, signed by Governor George F. Shepley, December 1, 1863.

Commission of Louis Lombard, signed by Governor Wickliffe, July 8, 1857.

Commission of S. Fulton, signed by Governor Jas. Vilerre, January 27, 1817.

Commission of Sr. Cijournaux, signed by Louis XVI, January 13, 1775.

Commission of Wm. H. Seymour, signed by Governor J. M. Wells, December 21, 1864.

Commission of Wm. H. Seymour, signed by Governor Michael Hahn, March 20, 1864.

- Concession granted by Governor Miro to Don Carlos Trudeau, March 13, 1778.
- Manumission papers of slave, signed by Governor Kerlerec, January, 1761.
- Marriage license issued to Cyprien Gross, signed by Governor W. C. C. Claiborne, January 9, 1805.
- An order from the Superior Council, signed by Lafreniere, De Macarty, Marigny de Mandeville.
- Oath of office taken by Governor Joshua Baker, January 8, 1868.
- Order of payment of certain debts signed by Baron de Carondelet, February 13, 1793.
- Leave of absence signed by Governor Francis T. Nicholls, January 3, 1880.
- Leave of absence, signed by Governor Murphy J. Foster, March 30, 1899.
- Leave of absence, signed by Governor W. W. Heard, February 14, 1902.
- Letter from Louis XIV to Due D'Aguesseau, concerning the war in Flanders, 1766.
- Letter from W. P. Kellogg to Wm. H. Seymour, May 22, 1872.
- Letter of recommendation given to Valette by Galvez, March 20, 1783.
- License, signed by Governor Louis A. Wiltz, March 25, 1880.
- Papal dispensation, Pope Pius VI.
- Passport issued by Zayas to Valette, June 9, 1784.
- Will of Don A. Food, signed by the Baron de Carondelet and Nicholas Vidas.
- Facsimile of Ordinance of Secession of Louisiana, January 26, 1861.
- Confederate bond, \$1,000, signed by Governor Moore.
- Signatures of Davidson Penn, H. C. Warmoth, John McEnery, Stephen B. Packard.
- Signatures of Presidents of United States.
- Portraits of Governor H. W. Allen, Governor O. Hebert and Henry Stanley.
- Print, LaFreniere's appeal to Superior Council.

Facsimile of communication of Laussat to DeLassus, January 12, 1804.

Dr. W. Laurence Stevenson:

Colonial lamp post of cypress, from old Levee street.
 Pieces of timber taken from steamboat Star of the West.
 Wooden cross from Old St. Louis Cemetery.
 Six-pounder cannon ball, Chalmette.

Dr. William C. Stubbs:

General orders issued by Admiral D. Porter, U. S. Gunboat Indianola, captured by General J. L. Brent, 1862.
 Gift of Mrs. Brent.
 Album of photographs; Some Louisiana Waterways; 1907.

John Teunisson:

Twenty photographs illustrating noteworthy scenes and events in New Orleans.

J. A. Thompson, Alexandria, La.:

Six-pounder solid shot, Chalmette battlefield.
 Sword sash worn by Col. Henri Roux under Napoleon.
 Pistol holster worn during civil war, initials "A. C."
 Army canteen found on Mansfield battlefield, civil war.
 Belt buckle worn by H. Dupre, Company F, Fifth Louisiana Infantry, civil war.
 Pewter drinking cup carried by J. Dietz, civil war.
 Pair brass stirrups used by J. A. T., civil war.
 Pair handcuffs, civil war.
 Cartridges from Spanish-American war.
 Brass inkwell and penholder, antique.
 Cut-glass antique inkwell.

T. P. Thompson:

Letter, Sarah Bernhardt, 1906.
 Letter, Countess diBrazzi, 1904.
 Letter, Archbishop P. L. Chapelle, 1904.
 Letter, John R. Ficklin.
 Letter, Juan P. Marcell, Commander Rio de la Plata.
 Letter, Bruce R. Payne, 1906.
 Letter, Archbishop S. G. Messmer, 1905.
 Letter, Booker T. Washington, 1906.
 Letter, Colonel Wilcox, 1838.
 Letter, from field by Confederate soldier, Danville, 1863.

- Letter, from field by Confederate soldier, Richmond, 1864.
- Letter, Marquis de Lafayette, 1828.
- Signature and coat of arms, Don Alexander O'Reilly.
- Contract with Latrobe, construction of Cathedral tower, 1819.
- Latrobe's last commission, article by Allison Owen.
- Report on drainage system for New Orleans. General Beauregard, 1856.
- Mutual Benefit Life and Fire Insurance Company, report, 1852, New Orleans.
- Special freight tariff, 1858, G. C. & A. G. T. R. R.
- Articles of agreement schooner Tranquil, 1866.
- Soldier's certificate of discharge, 1868.
- Slave sale certificate, 1851.
- Slave sale certificate, Otero, 1851.
- Account, W. Delhonde with Perret Estate, 1838.
- Statement of receipts and expenses Charity Hospital, 1821.
- College of Orleans, 1814; first report of trustees.
- Protest of trustees, College of Orleans, against Lakanel.
- General orders, Ashley, 1838.
- Newspapers: Philadelphia Price Current, 1843.
- Columbia, Centinel, 1803.
- Massachusetts Federalist, 1803.
- Picayune, January 28th, 1837, reprint of first issue.
- Clippings—Louisiana news.
- Colored print by Boqueta Woissera—View of New Orleans, 1803.
- View of Charleston.
- View of New Orleans, Norman, 1846.
- Battle of New Orleans, H. LaClotte, colored print.
- Key to Battle of New Orleans, by LaClotte.
- Portraits: Napoleon, Gen. G. H. Thomas, Andrew Jackson, Thomas Jefferson, Antonio de Sedella, General Beauregard; nine prominent citizens of New Orleans.
- Curious view New Orleans at high water, 1819.
- Print—Francis Coulon de Villiers.
- Print—City Hall, New Orleans.
- Photograph—St. Charles Hotel after the fire, 1894.

- Photograph—First exhibit Colonial Museum, 1903.
 Photograph—Canal street at night.
 Old print—Andrew Jackson.
 Old print—Battle of New Orleans, Sept. 14, 1874.
 Print—Hennepin at Falls of St. Anthony, 1680.
 Print—Odd Fellows Hall.
 Photograph—Total eclipse of sun, 1900.
 Photograph—Arming volunteer police, negro riot, 1900.
 Photograph—Parade on Washington's Birthday, New Orleans, 1876.
 Facsimile—First portrait made by Daguerre process, 1839.
 Facsimile of process verbal signed by President McKinley, 1901.
 Memorial badge, McKinley, 1901.
 Confederate bond No. 908 for \$50.
 Inlaid snuff box of Bishop DuBourg, 1815.
 Watchman's rattle, 1815.
 Tinder box, silver and steel, Sam Dale.
 Baton of drum major, Pakenham's Army, Battle of New Orleans.
 Sheath for soldiers' spade.
 Scabbard found at Baratavia.
 Army canteen found in possession of Geronimo.
 Powder horn, owned by Sam Dale, Mississippi partisan.
 Granite corner stone, inscribed—Clark Mills. 1846.
 Index collection (6,000) Louisiana books and pamphlets, titles and contents bound, 203 pp.
 Adolphe Voigt, Colorado Springs, through John T. Michel:
 Letter, Lieutenant General Winfield Scott to Governor Isaac Johnson, 1848.
 Miss Emma Zacharie:
 Letter, General Bertrand to Mons. Zacharie, New York, 1843.

ARMS AND WEAPONS.

Harry F. Baldwin:

Sword and sheath, silver mounted, of Col. Michel Fortier,
and used at Battle of New Orleans.

Spanish sword found on Chalmette battlefield.

Flint lock pistol used by Col. Richard Johnson when he
killed Tecumseh.

Ivory handled revolver used by Gen. Joe Wheeler, 1862.

Flint lock musket used by the Courier de bois of
Louisiana.

Bow gun, Italian, seventeenth century.

French cannon, from Fort St. Philip, New Orleans.

Dr. Joseph Bauer:

Nelson dagger, given by General Andrew Jackson to Gen.
Prosper Foy, 1815.

Mrs. Frances D. Blake:

Two small Derringer pistols, silver mounted.

General A. B. Booth, representing Louisiana National Guard:

Two brass Napoleon cannon, 12 pounders, used by Metro-
politan police in battle with Citizens White League
and captured by them New Orleans Sept. 14, 1874.

P. Chiriboga, Ecuador:

Spanish Arabian flint lock musket, ivory and silver
mounted; bows and arrows, Peruvian Indians; curious
pair duelling pistols, pinfire, Spanish, silvered.

Peter Claus:

Curious air pistol, found in excavating at Allen and Ro-
man streets.

Gaspar Cusachs:

Set of duelling pistols of P. LaBranche.

Set of duelling pistols, flint lock, of P. Bienvenue.

Pistol found on blockade runner Webb.

Pair duelling pistols, 1850, percussion cap.

Policeman's pistol, 1846.

Hammerless pistol.

Trap gun pistol, very curious.

Jefferson Davis pistol, ivory mounted, 1846.

Pistols, Reuthes patent.

Gold handled gun cane of P. LaBranche.

Two swords used by Orleans Artillery in Mexican war.

Two stiletos used during reconstruction days.

Pair iron knuckles.

Two French cannon from Bienville's House, 1718.

E. Daboval, Jr., Rayne:

Sword and sheath of Col. Alexander Lesseps used at battle of New Orleans, 1815.

Amede Fortier, Ama, La., through J. Steckler Seed Co.:

Gas pipe cannon mounted on cypress block; dug up in field.

Robert Glenk:

Derringer pistol, silver mounted.

Mrs. Joseph Jones:

3 revolvers.

7 pistols, percussion cap, various kinds.

2 sabers.

2 knives.

2 stiletos.

H. Gibbes Morgan, Jr.:

Old English fowling piece.

Set of duelling pistols.

Flint lock pistols, one and two barrels.

Percussion cap pistols (7).

Hunter's knife and axe, collapsible; very unique.

J. A. Thompson, Alexandria:

Sword of British soldier, Co. I, 63rd Regiment, Chalmette.

Steel dagger formerly belonging to Tony Costa.

T. P. Thompson:

Sword from Chalmette.

Sword of Orleans Artillery,

Flint lock pistol.

Pair duelling pistols.

Japanese sword and scabbard.

Sword and belt belonging to Geronimo.

Bow and arrows from Geronimo.

M. M. S. :

- Flint lock musket, 1812.
- 12 muskets used by Citizens' White League, 1874.
- 2 percussion cap pistols, curious brass barrels.

MAPS AND PLANS.

Gaspar Cusachs :

- Plan de la Ville de la Nouvelle Orleans, 1723, D. Pauger.
- Plan Nouvelle Orleans, 1724.
- Plan of New Orleans; Delta of Mississippi River; east pass of Mississippi River; Hedendaagsche Historie, 1740.
- Plan of New Orleans from Fort St. Charles, 1770.
- Plan de la Nouvelle Orleans, N. Bonne, 1744.
- Plan New Orleans, T. Kitchin, 1765.
- Plan de la Nouvelle Orleans, Bellini, 1762.
- Plan New Orleans, R. Benning, 1815.
- Commercial map of New Orleans, A Persac, 1871.
- Topographical map of New Orleans and vicinity, C. F. Zimpel, 1851.
- Plan of Fort Baton Rouge, Collot, 1770.
- Plan of Fort and Town of Natchez, Collot, 1770.
- Carte de la Louisiana, Del 'Isle, 1718.
- Carte du Mexique et de la Florida, Del'Isle, 1703.
- Carte de la Nouvelle France et de la Louisiane, Hennepin, 1683.
- Nouvelle Espagne, Floride, 1702, N. de Fer.
- La Louisiane et Pays Voisins, M. Bellini, 1757.
- Louisiane et Floride M. Bonne, 1744.
- L'Amérique meridionale et septentrionale, 1717, N. deFer.
- Map of American Indian Nations in E. and W. Florida, 1775, J. Adair.
- Carte de la Louisiane, Florida, 1750, M. Bonne.
- Map of Mississippi River from sea to Bayou Goula, 1812.
- Map of Mississippi River from Balise to Fort Chartres, 1765, Lieutenant Ross.
- Chart of sources of Mobile and Yazoo Rivers, 1770.
- Map of Missouri and Mississippi Rivers, 1770.
- Map of the Country and of the Illinois.



III)

GALLERY OF PAINTINGS AND MISCELLANEOUS ART OBJECTS.

Map of Southern Dominions of U. S. and Spanish possessions, 1794, Laurie.

Map of the Guinea Coast, 1780.

Map of Ohio River, 1770.

Plan of St. Lewis, 1770.

Plan of Pittsburg, 1770.

Plan of road from Limestone to Frankfort, Ky., 1770.

Louisiana, showing Spanish grants, settlement rights and plantations, J. LaTourrette, 1846.

Map Pointe Coupee, Iberville, and W. Baton Rouge Parishes, 1851.

Map of St. James, Ascension, Assumption, LaFourche and Terrebonne Parishes, A. J. Powell, 1851.

Map of North America, 1852, Jacob Monk.

Lower Mississippi River, Plantations, A Persac, 1858.

Two Louisiana official maps, Hardee, 1871.

Township maps of Louisiana Parishes, 1860, as follows:

Ascension,	Ouachita,
Avoyelles,	St. James,
Caldwell,	St. Landry,
Carroll,	St. Martin,
Catahoula,	West Baton Rouge,
Franklin,	Winn,
Madison,	Tensas.
Moorehouse,	

Plan of Battle of New Orleans for freedom, Sept. 14th, 1874.

J. Brewer:

Map of Louisiana, 1853, Surveyor General of U. S.

Robert Glenk:

Plan of seawall and contemplated improvements of Lake Shore front at West End, New Orleans, 1873. W. H. Bell, City Surveyor.

John Teunisson:

Map of New Orleans, 1892.

T. P. Thompson:

Portion of Louisiana showing route of New Orleans, Opelousas and Great Western R. R., 1854.

Plan of Faubourg Treme, 1839.

Topographical map of New Orleans and vicinity, C. F. Zimpel, 1834.

Chart of Mississippi River from Belise to Fort Chartres, Lieutenant Ross, London, 1772.

Map of Algiers, 1855.

Map of United States, showing water tributaries emptying into Mississippi River.

Map showing relative distances of New Orleans to principal cities of United States.

World's Panama Exposition Co.:

Map of the world showing trade routes and distances from New Orleans to principal commercial seaports.

Topographic map showing New Orleans, Panama and Rocky Mountains.

Map of relative distances, New Orleans, San Francisco.

Map showing waterways connections of New Orleans.

Relief map of Panama Canal.

COINS, MEDALS AND PAPER MONEY.

Marc Antony, coins:

British West Africa, 2	Netherlands, 2
Panama, 3	France, 1
Costa Rica, 4	Germany, 3.
Mexico, 4	Spain, 1
New Foundland, 1	Russia, 7
Canada, 1	China, 2
Great Britain, 5	Japan, 1

Dr. Joseph Bauer:

Medal, Washington Allston, American Art Union, 1847.

Medal presented to General Zachary Taylor by State of Louisiana, 1849. Design by Duggan, New Orleans.

Medal, George Peabody, commemorative, 1867.

Paper money, Continental currency, \$5, 1776.

Continental currency, \$2, 1776.

Georgia certificate, Continental currency, \$2, 1777.

South Carolina certificates, Charleston, ten pounds, 1775.

Mayor Martin Behrman:

Medal, Mobile Bicentennial Celebration, 1910.

John Boffato:

U. S. silver half dime, 1870.

Sam Blum:

Paper money, Mechanics and Traders Bank, New Orleans,
\$3.00.

Badge of G. B. of M. of W. E., 1902.

Badge T. P. A., Old Point Comfort, Va., 1901, Tennessee.

Badge T. P. A., Old Point Comfort, Va., 1901, Philadelphia.

Badge T. P. A., Old Point Comfort, Va., 1901, Kentucky.

Badge T. P. A., Old Point Comfort, Va., 1901, Oregon.

Badge T. P. A., Old Point Comfort, Va., 1901, Ohio.

Badge T. P. A., Old Point Comfort, Va., 1901, Wisconsin.

Badge T. P. A., Old Point Comfort, Va., 1901, Nebraska.

Badge T. P. A., Old Point Comfort, Va., 1901, Missouri.

Badge T. P. A., Richmond, Va., Louisiana.

Badge T. P. A., Richmond, Va., Arkansas.

Badge T. P. A., Richmond, Va., Illinois.

Badge T. P. A., Richmond, Va., Texas.

Badge T. P. A., New Orleans, 1900.

Badge National Irrigation Congress, Spokane, 1909.

Badge Mississippi Valley Commercial Congress, San Antonio, 1910.

Badge Interstate Inland Waterways League, New Orleans, 1908.

Badge Ohio Valley Exposition, 1910.

Badge Hippodrome, New Orleans, 1908.

Badge Deep Waterways Convention, New Orleans, 1909.

Badge Rivers and Harbors Congress, Washington, D. C.,
1910.

Henri E. Buck, Delaware. Ohio:

Memorial medals of the Kings of France.

Clotaire, 500-561.

Dagobert, 604-638.

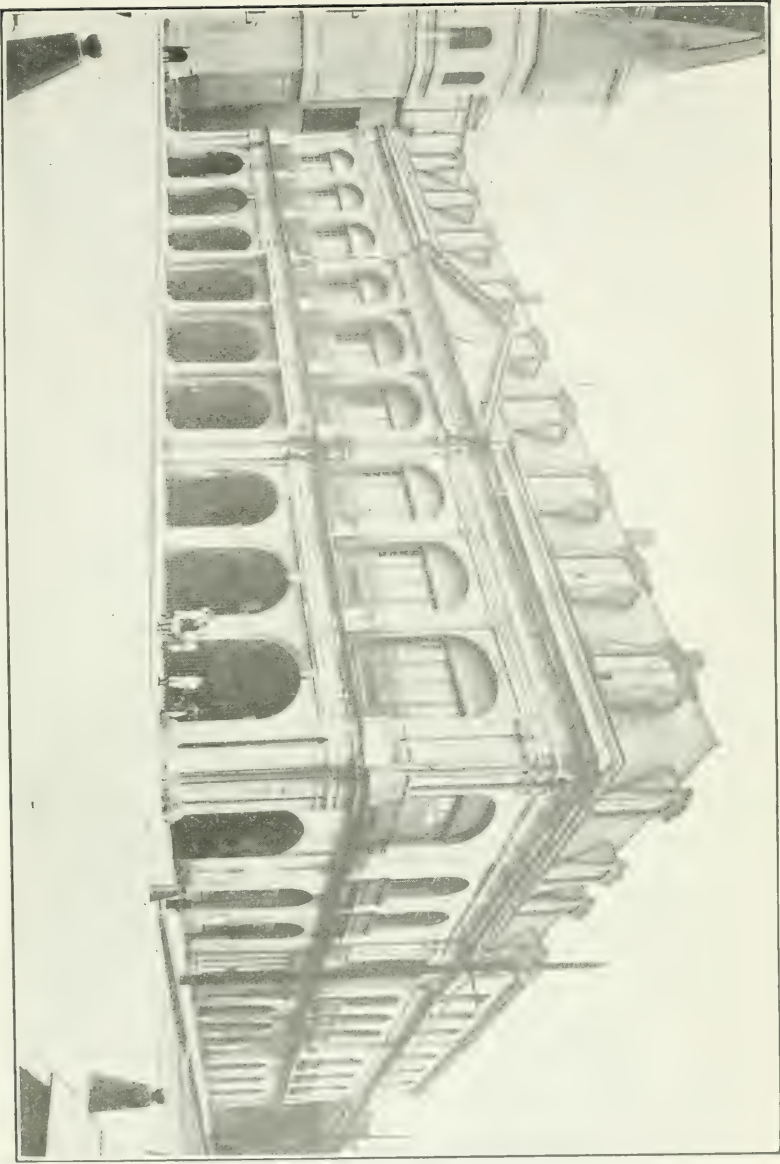
Childebert, 682-711.

Charlemagne, 742-814.

Hughes Capet, 941-986.

Louis V, 968-987.

- Robert, 971-1031.
 St. Louis, 1215-1270.
 Henri II, 1552-1559.
 Louis XVI and Marie Antoinette, 1793.
 Commemorative medal, victory Sebastopol, 1855.
 Confederate cent, brass, 1860.
French.
 French coinage—Copper coin, 625.
 Charlemagne, Dernier cet, 768, silver.
 Louis I, 814, Cross R, silver.
 Henri III, Double T.
 Charles VI, gold, 1380, Ecu coronne.
 Charles VIII, 1483, silver and copper.
 Louis XVI, 1779, 1-10 ecu and silver.
 Henri II, brass, 1559.
 Francis de Bourbon, 1525, double tournois copper.
 Francis I, 1582 silver —3.
 Henri IV, 1607, double T, 1608, 1 T —5.
 Henri I, de la Tour, 1632, F. Maurice, copper.
 Gaston of Orleans, 1627, copper —3.
 Louis XIII, 1612, 1-2 ecu copper —4; 1643, ecu, silver.
 Louis XIV, 1644, silver; 1676, copper —3.
 Charles II, 1654, copper.
 Louis XV, 1770, ecu, silver; 1765, 5 fr., silver; 1727, 1-15
 ecu, 1-2 ecu; 1722, French Colonies; 1767, French
 Colonies, copper.
 Louis XVI, 1775 Consecration crown, silver; 1793, sou,
 copper —2; 1777-1782, copper.
 First Republic, 1800, copper —2; 1798, copper —2.
 Republic Francaise, Napoleon, 1807, 5 fr., silver.
 Napoleon I, demi franc, 1808, silver.
 Republic L'An 12, Bonaparte 1st Consul, 5 fr., silver.
 Empire Francaise, 1811, 12, 13, 5 fr., silver.
 Napoleon, 1814, decime, silver.
 Napoleon, Italy, : 1814, silver.
 Louis XVIII, 1814, 5 fr.; 1824, 5 fr.; 1824, 1 fr., silver.
 Charles X, 1826, 5 fr., silver.
 Louis XVIII, 1828, sou, copper.



Republic Francaise, 1849, 5 fr.

Napoleon III, 1853, 10 cent; 1855, 5 cent; 1859, 50 cent,
silver.

Spanish.

Philip V, 1723, silver—9.

Carlos III, 1761-1782, silver—7 picayunes.

Carlos IV, 1790-1820, silver—6.

Ferdinand XII, 1823, silver.

Isabella, 1854, copper.

Paper Money.

Improvement and Banking Co., New Orleans, \$5, 1836.

C. W. Cammack, New Orleans, \$1, 1862.

J. & C. Davidson, New Orleans, 50c, 1861.

Parish of Catahoula, 25c, 1862.

Gaspar Cusaechs:

Colonial French coins, copper, 1722-1723.

Medal, Duke d'Enghein, 1804, copper.

Medal, Napoleon, Emperor, 1809, bronze.

Medal, Frederick the Great, 1786.

Medal, Carlos III, for merit, 1782.

Medal, Wellington, commemorative.

Medal, Cotton Centennial Exposition, 1884.

Medal, Louisiana Purchase Exposition, gold, 1904.

Medal, gold, presented by Andrew Jackson to Jordan
Nobles, 1847.

Paper Money.

State of Louisiana, Baton Rouge, \$5, 1862.

State of Alabama, Montgomery, 10 cents, 1860.

Parish of Baton Rouge, 5 cents, 1861.

West Feliciana R. R. Co., Woodville, Miss., \$2, 1862.

Carondelet Canal and Navigation Co., \$1, 1861.

City of New Orleans, \$2, 1861.

City of New Orleans, signature A. Macarty, deux escalin,
1816.

Hopkinsville, Kentucky, branch bank, 25 cents, 1816.

Parish of Iberville, 25 cents, 1862.

Government of Texas, \$3, Houston, 1838.

Government of Texas, \$10, Houston, 1838.

Republic of Texas, \$10, Houston, 1837.

Republic of Texas, \$3, Houston, 1838.

City Warrant, Natchez, \$1, 1862.

French Colonial paper money, 15 sols, 1792, New Orleans.

French Colonial paper money, 25 sols, 1792, New Orleans.

Confederate States of America, Richmond, \$1, \$5, \$10, \$20.

Justin F. Denechaud :

Coins.

U. S. silver dollars, 1799, 1840, 1850.

U. S. silver half dollars, 7.

U. S. silver quarter dollars, 2.

U. S. silver dimes, 4.

U. S. silver half dimes, 9.

U. S. silver 20c pieces, 2.

U. S. silver 3c pieces, 1.

U. S. nickel 3c pieces, 7.

U. S. nickel 5c pieces, 5.

U. S. copper 2c pieces, 2.

U. S. copper 1c pieces, 10.

U. S. nickel 1c pieces, 10.

U. S. copper cents, large, 56.

U. S. copper half cents, 5.

War tokens, 1860, 5.

Jackson cents, 1838, 3.

Washington cents, 1791-1798, 7.

Martha Washington, 1-2 dime, 1792.

Colonial Coins—

Pennsylvania, 1787.

Connecticut, 1730, 1737, 1787.

New York, 1785.

Kentucky, 1766.

Virginia, 1773.

Baltimore, 1776.

Washington tokens, 2.

Foreign Coins.

Colombia, 2.

Costa Rica, 4.

Guatemala, 10.

Danish West Indies, 1.

Mexico, 16.

Barbados, 1.

- | | |
|---|--------------------|
| Brazil, 4. | New Brunswick, 1. |
| Hayti, 1. | Nova Scotia, 1. |
| Uruguay, 1. | Canada, 9. |
| Peru, 1. | Philippines, 1. |
| Dominican Rep., 1. | Hungary, 7. |
| San Salvador, 1. | Great Britain, 16. |
| Nicaragua, 7. | Old English, 20. |
| Greece, 1. | Hibernia, 5. |
| Turkey, 5. | Belgium, 2. |
| Germany, 15. | Austria, 2. |
| Netherlands, 6. | Italy, 1. |
| Russia, 10. | Japan, 2. |
| France, 6. | Roman Empire, 13. |
| American Colonization Society, Liberia, cent, 1833. . . | |
| Schiller medal. | |
| Crusader coin, dated 625. | |
| Postage stamps, various denominations. | |

Paper Money.

- U. S. fractional currency, 50 cents, first issue.
- U. S. fractional currency, 50 cents, second issue.
- U. S. fractional currency, 15 cents.
- Argentine Republic, paper, 50 centavos.

Robert Glenk:

Paper Money.

- Bank of Clarendon, Fayetteville, N. C., \$5, 1860.
- Bank of the State of South Carolina, Charleston, \$1, 1861.
- State of Mississippi, faith of the State pledged, Jackson, \$5, 1862.
- State of Mississippi, faith of the State pledged, Jackson, \$5, 1862.
- State of Mississippi, faith of the State pledged, Jackson, \$10, 1862.
- State of Mississippi, cotton pledged, Jackson, \$3, 1862.
- State of Mississippi, cotton pledged, Jackson, \$5, 1862.
- State of Mississippi, cotton pledged, Jackson, \$5, 1862.
- State of Mississippi, cotton pledged, Jackson, \$20, 1862.
- State of Mississippi, cotton pledged, Jackson, \$50, 1862.

- Mississippi Central R. R. Co., Holly Springs, 25 cents, 1862.
 L. E. Carter, Pass Christian, Miss., 25 cents, 1862.
 Confederate States of America, Richmond, \$1, 1862.
 Confederate States of America, Richmond, \$1, 1862.
 Confederate States of America, Richmond, \$2, 1863.
 Confederate States of America, Richmond, \$20, 1863.
 Calve & Co., New Orleans, 25 cents, 1862.
 Patterson Iron Works, New Orleans, 25 cents, 1862.
 Patterson Iron Works, New Orleans, \$2, 1862.
 Beehive Packet Co., New Orleans, \$1, 1861.
 Red River Packet Co., New Orleans, \$1, 1861.
 Office of Picayune, New Orleans, 25 cents, 1862.
 I. L. Wilbur, New Orleans, \$1, 1862.
 Cook & Bro., New Orleans, 50 cents, 1861.
 Dr. Reedy, New Orleans, 25 cents, ———.
 P. F. Herwig, New Orleans, 50 cents, ———.
 J. N. Bradford & Co., New Orleans, \$3, 1862.
 Merchants and Planters' Bank, Savannah, Ga., \$1, 1857.
 Bank of State of Georgia, Savannah, \$1, 1861.
 Bank of State of Georgia, \$2, 1861.

Louisiana State Lottery Tickets.

- 60,233, drawing April 15, 1890.
 90,018, drawing April 14, 1891.
 15,185, drawing October 13, 1891.
 53,846, drawing October 13, 1891.
 82,581, drawing October 13, 1891.
 60,099, drawing March 8, 1892.
 2—1,217, drawing January 28, 1893.
 3—2,737, drawing January 28, 1893.
 2—94, drawing February 7, 1893.
 27,070, drawing February 7, 1893.
 1—34,937, drawing February 7, 1893.
 2—34,937, drawing February 7, 1893.
 1—52,392, drawing February 7, 1893.
 2—52,392, drawing February 7, 1893.
 Real Loteria de la Isla de Cuba, Habana:
 19873, Nos. 31-40, 1891.



05172, F3, 1892.
 00396, F5-10, 1892.
 09489, F27, 1892.
 07,913, F25, 1892.
 14282, F73-78, 1892.
 Louisiana Law Stamps, 5c, 10c, 25c, 50c, \$1.

Coins.

100 U. S. Copper coins.
 30 U. S. silver coins.
 10 U. S. nickel coins.
 3 U. S. gold coins, 25c, 50c, \$1.
 U. S. Lafayette dollar.
 Columbian half dollar, 1892.
 War tokens, New Orleans, N. C. Folger.
 Russian coins, 9. Italy, 2.
 Poland, 1. Belgium, 1.
 Austria, 4. Canada, 4.
 Roumania, 3. Great Britain, 4.
 Hungary, 1. Switzerland, 9.
 Turkey, 3. German States, 8.
 Netherlands, 2. China, 2.

Medals.

Cotton Centennial Exposition medal, 1884.
 Transmississippi Exposition, 1898.
 Exposition Universelle Internationale, 1900.
 Pan American Exposition, 1901.
 Louisiana Purchase Exposition, 1904.
 Lewis and Clark Centennial Exposition, 1905.
 Milan Exposition, 1905.
 Jamestown Tercentennial Exposition, 1907.
 Hudson Fulton Centennial.
 Peace Jubilee, Philadelphia.
 Panama Exposition souvenir medal.
 Jubilee medal, 1848, first German Unification Convention.
 Rear Admiral Lord Nelson commemorative medal, 1798.
 Stock certificate, N. O. Opelousas and Great Western R.
 R., 1861.

H. Gibbes Morgan, Jr. :

Bronze medal, Mechanics and Agricultural Fair Ass'n., La.

Mrs. L. M. Percy, Flushing, N. Y., through W. O. Hart :

Hudson-Fulton Centennial Celebration medal and stamp.

Baptiste Pier :

Two Spanish coins, 1723, 1731.

Jacob Remy Pierre :

Spanish coin, Alfonso XII, 1872.

Alcide Salaun, Sr. :

U. S. silver coin, 20-cent piece, 1875.

J. A. Thompson, Alexandria :

Medal, Spanish, second epoch, con triple guarantia.

T. P. Thompson :

Commemorative medal, Roosevelt inauguration .

Art Department.**SCULPTURE.****Dr. Joseph Bauer :**

Bust in plaster, James P. Caldwell, actor, by Garbeille.

P. Chiriboga, Ecuador :

Alto relief in wood, figure of Pope, Spanish, 15th century.

Alto relief in alabaster, Jacob's dream, Spanish.

Alto relief in alabaster, wedding in Canaan, early Spanish.

Statue of saint, carved wood, enameled, Spanish, 15th century.

Ivory carving, Christ crucified, 15 inches, Spanish, 15th century.

Ivory carving, Virgin, 6 inches, Spanish, 15th century.

Charles Hardwick :

Bust in plaster, Benjamin Franklin, after Houdon.

Alexander Pujol :

Bust in plaster, Edward Livingston.

Bust in plaster, John Marshall.

Bust in plaster, Christian Roselius, by A. Parelli, 1870 .

George Sassinot :

Bust in plaster, General Beauregard, by A. Parelli.

M. M. Smith :

Bust in terra cotta, Garibaldi.

- Bust in plaster, Admiral Sampson.
 Bust in Bronze, Charles Dickens.
 Head of a Greek figure of a man, broken from statue,
 marble.
 Bas relief in plaster, Robert E. Lee.
 Bas relief in plaster, Edward Livingston.

WATER COLORS.

M. Durrive:

- Wood duck, by H. P. Veazie, 1899, 12x20.
 Blue winged teal, by H. P. Veazie, 1899, 12x20.
 Portrait of Madam X., by Andrieu, 1845, 9x12.
 Scene on Dutch canal, by L. N. Oliver, West Point, 1861.

Gaspar Cusachs:

- Portrait, Pere Antoine, by A. Alaux, 5x7.
 Portrait, Don Almonester y Roxas, A. Alaux, 5x7.
 Portrait, Bishop Penalver y Cardenas, A. Alaux, 5x7.
 Portrait, Captain Rousseau of brig Galvestown, A. Alaux,
 5x7.

ENGRAVINGS, LITHOGRAPHS, CRAYONS.

William Agar:

- Lithograph, La Salle taking possession of Louisiana, 1683.

Gaspar Cusachs:

- Lithograph, St. Charles Theatre, New Orleans, interior,
 1838.

Great Mississippi steamboat race.

Midnight race on Mississippi.

De Soto, burial of, in Mississippi river, 1542.

Etchings—

Courtyard on Royal street, New Orleans, B. A. Wik-
 strom, 1885.

Belle of 1840, by Madeline T.

Engravings—

Discovery of America by Christopher Columbus.

Henry Clay making speech in U. S. Senate, 1850.

U S. Senate Chamber, Missouri Compromise debate.

View of New Orleans from lower cotton press, B. Don-
 dorf.

Embarkment of Manon Lescaut.
 Indian of Mandanes.
 Indian of Nation of Kaskaskia.
 Indian of Nation of Shawanoes.
 General P. G. T. Beauregard.
 Lithographs, two views, Mexican war.
 Lithographs, plates from Audubon's Birds of America:
 American gold-crested wren.
 Brown pelican.
 Night heron.
 Song sparrow.
 Summer or wood duck.

Dr. I. M. Cline:

Lithograph, marsh hare, plate from Audubon's Animals.

P. Chiriboga:

Old Dutch; religious subjects, signed Aug. Vindel,
 30x40 (11), mezzotint engravings.

Engraving—Old Spanish on silk.

Engravings—Old Spanish, 20, in book form, Life of
 Christ.

Engravings—Old Dutch, Mythological subjects, signed
 Picard, Amsterdam, 1773.

M. Durrive:

Pen and ink drawing; Old Colored Mammy, by Helen
 Pitkin, 8x10.

Lithograph, George Sand, 16x20, Emile Lassalle, 1850.

Lithographs—2, views of Paris.

Engravings—Hippocrates, R. U. Massard, Paris, 22x28.

Sacrifice to Pan, J. M. B. Pierre, Paris, 17x22.

Dajanire and Centaur Nessus, P. Pecheux, Paris,
 17x22.

Amour of Henry IV.

Venus at bath.

Columbus and his friends.

Eugenia.

Frederick the Great.

Revolutionary heroes.

Florence Nightingale.

George Peabody.

Burial of Latanie.
 Robert E. Lee.
 General P. G. T. Beauregard.
 Woman of 1850.
 Soldier's Dream, colored.

Alcee Fortier :

Lithograph, view of transept of Hyde Park Exposition building, London, 1851, 25x35.

Louisiana Historical Society :

Portraits in Crayon—

Judge J. Bullard.
 Judge F. X. Martin.
 Judge W. W. Howe.
 Judge Charles Gayarre.

Photograph of Prof. Alcee Fortier.

Photograph of Gov. Don M. Hault de Lassus, from Misses de Lassus.

Photograph of Jean Baptiste Prudhomme.

H. Gibbes Morgan, Jr. :

Engraving, Andrew Jackson.

David Rosenberg, through W. O. Hart :

Engraving, First Trial by Jury, H. S. Sadd, 18x24.

Henry de los Ruellos :

Lithograph, La Salle taking possession of Louisiana, 1683, 18x24.

Judge Wm. H. Seymour, Algiers :

Lithograph, meeting of Washington and Lafayette at Mount Vernon.

Mrs. William C. Stubbs :

Engravings, two views of New Orleans from lower cotton press, D. Dorndorf.

T. P. Thompson :

Engraving, Andrew Jackson.
 Engraving, death of Pakenham.

World's Panama Exposition Company :

Photograph of members of Louisiana Legislature at Washington, D. C., in behalf of Exposition for New Orleans.
 Photograph of city delegation at Washington, D. C.

Photograph of members executive committee.

Photographs, twelve views of harbor and buildings, New Orleans.

Purchased.

Engraving, deathbed scene, Napoleon at St. Helena, 1821.

Photograph, view in front of Cabildo, Centennial celebration, 1903.

Photograph, Knights Templar parade, St. Charles avenue, 1875.

OIL PAINTINGS.

Battalion Washington Artillery :

Full length portrait General Andrew Jackson, by ———.

Dr. Joseph Bauer :

Portrait, Governor H. S. Thibodaux, 25x30.

Portrait, Mrs. (Governor) Thibodaux, 25x30.

Portrait, Pere Antoine.

P. Chiriboga, Ecuador, Consul to United States :

On Canvas—

Magdalen, Venetian school, 16th century.

Head of Christ, Bologna, 16th century.

Holy family, Spanish school, 17th century.

Cherubs, Florentine school, 17th century.

Christ in temple, Spanish school, 17th century.

St. Francis Xavier, 1740.

St. Francis de Asissi, Seville school, 17th century.

Christ with cross, Spanish school, 17th century.

Virgin, Spanish school.

On Copper—

Adoration of Shepherds.

Nativity, Spanish school, 17th century.

Presentation in the Temple, Spanish school, 17th century.

Visit of St. Elizabeth, Spanish school, 17th century.

St. Thomas and the Virgin, Spanish school.

St. Dominic, Italian, 18th century.

St. Thomas of Aquin, Italian, 18th century.

Christ on Cross, Spanish.

St. Thomas, Spanish school.

St. Vincent Ferrer, Spanish school.

St. Jerome, Spanish school.

Ascension.

On Wood—

St. Antonio, Seville school, 17th century.

Virgin, early Spanish.

St. Augustine, Italian, 17th century.

Fall and Redemption, Italian, 18th century.

Judgment of Solomon, Dutch.

Adoration of Shepherds, Spanish school.

St. Jerome, Spanish school, 17th century.

On Parchment—

Bacchus and Ariadne, Italian school.

Rape of Euridice, Italian school.

On Alabaster—

Christ Bearing Cross, Spanish.

St. John the Evangelist, Spanish school.

On Glass—St. Peter, Spanish school.

Dr. Charles Claremont, Alexandria:

Portrait, Governor Joseph W. Walker, 1850.

Dr. I. M. Cline:

Portrait, John Slidell as U. S. Senator, by E. Wood Perry,
1860.

Portrait, Adolphe Degelos, by J. H. Beard, N. A., 1840,
30x40.

Portrait, wife of A. Degelos, by J. H. Beard, N. A., 1840,
30x40.

Gaspar Cusachs:

Portrait, Marie Laveau, by C. Catlin, 1833, 18x25.

Coffee stand, French Market, of Rose Nicaud, by R. Claque.

Saengerfest hall, site of Public Library, New Orleans,
1890, by ——.

Alcee Fortier:

Portrait of Alexander LaBranche, 1812.

Mr. Hugh Flynn, through Mrs. N. D. McDonald:

Portrait of General Zachary Taylor, by William G. Brown,
1847, painted at Walnut Springs, Mexico, 30x36.

Henry LaRue:

Portrait, J. N. Destrehan, 30x36.

Louisiana Historical Society:

Portrait, General Plauche, by Vaudeschamp, 1820.

Portrait, Madam L. E. Forstall, by Vaudeschamp, 1820.

Portrait, Col. Emile Forstall, by ———.

Portrait Prof. Hanno Deiler, by A. Nolte, through
Deutsche Gesellschaft.

Louisiana Sugar Planters' Association:

Portraits—

Charles V. Moore, by A. Molinary,

Hon. E. J. Gay, by A. Molinary.

Charles Devenport, by I. Osieran.

E. F. X. Dugas, by R. Bohunek.

G. A. Breaux, by R. Bohunek.

J. U. Payne, by R. Bohunek.

R. R. Barrow, by R. Bohunek.

Dr. H. J. Sanders, by R. Bohunek.

Lewis S. Clark, by R. Bohunek.

J. W. Libby, by R. Bohunek.

J. W. Barnet, by R. Bohunek.

A. Lesseps, by R. Bohunek.

August Lesseps, by P. Poincy.

A. de Clouet, steel engraving.

Judge W. B. Mathews, Washington, D. C.:

Lee and his Generals, by G. B. Mathews, 12x20 feet.

Robert E. Lee.

Winnie Davis, by G. B. Mathews.

A. Molinary:

Portrait, Governor William C. C. Claiborne, 25x30, 1912.

Poydras Asylum:

Portrait, Julien Poydras, first president Constitutional
Convention.

Charles Reggio:

Portrait of Charles Olivier, 1812.

Very Reverend Peter Scotti:

Portrait of Antonio de Sedella, by Edmund Brewster,
1822, 5 1-2x8 feet.

Portrait of Bishop Penalver y Cardenas, by Franc. Sa-
lazar, 1802, 4x7 feet.



(XI)

SIDE VIEW OF NATURAL HISTORY BUILDING.

Portrait of Don Andres de Almonester y Roxas, 1796, 4x7 feet.

T. P. Thompson :

Portrait, Adah I. Menken, by W. H. Baker, 17x23.

Indian burial poles after Catlin, by W. Neuser, New Orleans.

Touro-Shakespeare Home :

Portrait, Judah Touro, 29x36.

J. A. Weisong, through W. O. Hart :

Portrait, Placide Bossier, 1812.

J. J. Wilkins :

Woodland scene, City Park, New Orleans, 1895, by P. Poincey, 10x15.

View in French quarter of New Orleans, 1895, P. Poincey, 36x46.

Steamboat Robert E. Lee at landing, by W. E. Feld, Chicago, 1887, 6x12.

Boathouse, Bayou St. John, New Orleans, by Geo. Gay, 1891, 15x24.

Portrait, 698, 24x30, J. Woodruff, 1856.

Portrait, 699, 24x30, J. R. Heoning, 1875.

Portrait, 700, 32x36, by Corti, 1836, C. Colson.

Portrait, 653, 14x17.

Portrait, 654, 17x23.

Portrait, 656, 29x35.

Portrait, 799, 34x42.

Portrait, 780, 8x10.

Portrait, 709, 25x30.

Portrait, 689, 25x32.

Portrait, 704, 29x36, by W. Neuser, 1868.

Portrait, 703, 29x36.

Portrait, 707, 29x36.

Portrait, 708, 25x30.

Portrait, 680, 25x32, by G. Develle, 1830, A. LeBlanc.

Portrait, 690, 20x25.

Portrait, 659, 13x17.

Portrait, 686, 8x10, by P. Schmidt.

Portrait, pastel of President John Adams.

MINIATURES ON IVORY.

Gaspar Cusachs:

Mrs. Audrey.
 John James Audubon
 J. Avendagno.
 Jean Baptiste LeMoyne de Bienville.
 Napoleon Bonaparte.
 Bonaparte, King of Rome.
 Etienne de Bore.
 Aaron Burr.
 Governor William C. C. Claiborne.
 Col. George Rogers Clark.
 Captain Clark.
 Henry Clay.
 Governor Pierre Derbigny.
 Lady Catherine Duer, nee Alexander
 Governor Bernard de Galvez.
 Governor Gayoso de Lemos.
 Pierre LeMoyne d'Iberville.
 Mrs. Ralph Izard, nee Alice Lancey.
 General Andrew Jackson.
 Mrs. Charles Carroll, Jr., nee Harriet Chew.
 Governor Louis Billouarte de Kerlerec.
 Mrs. Laurence Lewis, nee Eleanor Custis.
 Mrs. James Madison, nee Dolly Payne.
 Governor Estevan Miro.
 Mrs. Harrison Gray Otis, nee Sally Foster.
 Father Antonio de Sedella.
 Judah Touro.
 Miss S. VanNess.
 Governor Antonio de Ulloa.
 Governor James Villere.
 George Washington.
 Mary Ann Wolcott.
 Marchoness de Yonjo.
 Governor Don Alexander O'Reilly.
 Daguerrotype—Mammy and Baby.

POTTERY, PLATE AND MISCELLANEOUS ART OBJECTS.

P. Chiriboga, Consul of Ecuador:

Platter, Delftware, 18th century.

Two large jars, Chinese.

Majolica plates, caricature, French, Second Empire.

Antique lace, Flemish.

Antique lace, Flemish.

Antique lace, Brussels.

Antique lace, Brussels.

Lace collar, Brussels.

Embroidered silk, period of Directory.

Fans—Ivory with gold inlaid, style of Louis XV, French.

Mother of pearl, inlaid with gold, Louis XV French.

Ivory, daintily carved, Chinese.

Ivory, with hand-painted flowers, period of Directory.

Tortoise shell, Spanish.

Chairs (5), Spanish, 15th century, covered with embossed Cordova leather.

Chest of drawers, 15th century, carved ivory and tortoise shell, inlaid.

Jewelry case, 15th century, elaborately inlaid.

Antique iron lock for chest in form of Austrian eagle.

Two looking glasses, gilt oval frames, time of Louis XV.

Looking glass, Spanish.

2 Frames inlaid with silvered glass, 15th century, Spanish.

3 Frames, Renaissance style, gilt with gold leaf.

1 Frame, rococo style, ivory and tortoise shell, inlaid.

Three ornaments carved and gilt wood, from Chapel, early Spanish.

Stone vase, elaborate carving, from stone from Dead Sea; for perfume.

Embossed leather missile or book cover, Crucifixion, 15th century.

Gaspar Cusachs:

Gold watch of Governor Pierre Derbigny.

Watch fob of Governor Pierre Derbigny.

Monocle of Governor Pierre Derbigny.
 Silver bread basket from Confederate vessel—Virginia.
 Bronze gilt, candelabra and clock of J. N. Destrehan,
 1812.

Sevres porcelain, 20 pieces, 1824.

V. Lanza :

Two Roman vases, large size, one small.

Newcomb Art Pottery :

Newcomb pottery, 27 pieces, selected specimens.

M. M. C. :

Cake dish, Sheffield, silver on copper.

Pewter pitcher, 1800.

Brass tea kettle, colonial.

Brass syrup pitcher, wicker handle.

Decanter, blue glass, Bohemian.

Platter, Delft, mark—Gotha.

Cups and saucers, 4, Delft, mark—Amoy.

Plates and teapot and creamer, Delft, mark—Amoy.

Pitcher, wedgewood, colonial.

Statuette, china, Napoleon as First Consul.

Four poster, antique bed.

Dr. I. M. Cline :

Collection of pottery.

Pitcher, mottled copper lustre ware, colonial.

Two pitchers, copper lustre ware, old English.

Delft mug, 1760.

Delft salad dish, large size.

Martha Washington sugar bowl, 1799.

Wedgewood plate, Old South Church, Boston.

Wedgewood plate, Old North Church, Boston.

Majolica plate, lily of valley.

Majolica plate, French, 1800—Serraguemines.

Two Berlin plates, 1760, mark—K. P. M.

Majolica puzzle plate, mark—1830, A. C.

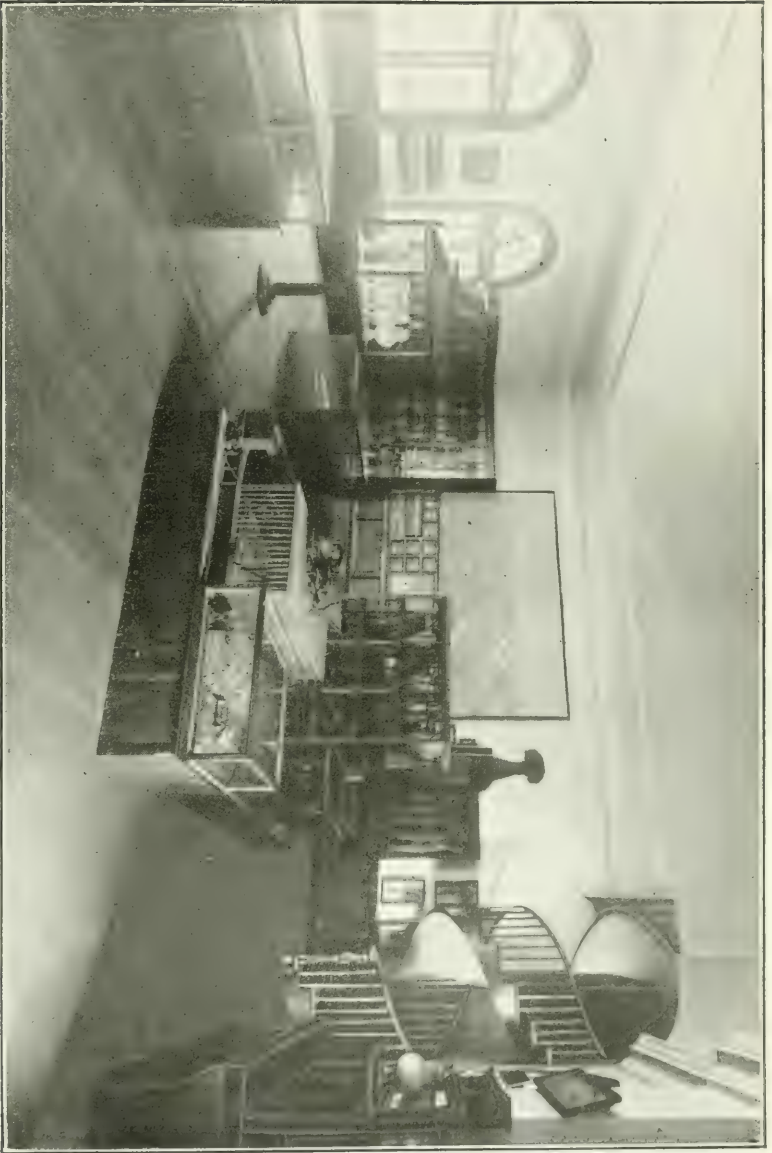
Wedgewood pitcher, white.

Black English teapot, mark—Ridgeway.

Rookwood teapot.

Alabaster bottle, Italian.

Wine bottles, unglazed, Spanish, 2.



Cup and saucer, Limoges, marked—Mallard, New Orleans, 1850.

Toilet stand, Sevres.

Old pewter and silverware.

Royal Hotel tea service, 5 pieces, silver on brass.

Pitcher, old French, silver on copper.

Silver cup, hammered; engraved ornamentation.

Sheffield coffee set, silvered pewter, 5 pieces.

French pewter, dry measures, set of four.

French pewter, wet measures, set of four.

Pewter pitcher, old Dutch.

Pewter teapot, old Dutch.

Pewter castor, 1811, 6 cut glass bottles.

Pewter teapot, melon shaped.

Pewter ladles.

Pewter goblet, A. H. I, 1871.

Pewter coffee urn.

Pewter tea set, Reed & Barton, 3 pieces.

Pewter trophy cup, A. Musgrove, July 25, 1861.

Colonial teapot and creamer, silver on copper.

Pewter cake dish, mark—Indian with drawn bow.

Dr. J. D. Fulton:

Mantel clock, French, period of Louis XV, gilt.

NATURAL HISTORY.

Department of Natural History.

Exhibits installed in Natural History Building, formerly the Presbytere; Chartres and St. Ann streets.

Accessions.

GEOLOGY.

Mrs. Virges Armistes:

Feldspar.

Rutile.

Sandstone.

Pumice, West Indies.

John Boffato:

Lava encrusted salt, Italy.

- E. G. Davis, Covington:
Soil and subsoil, St. Francisville.
- Robert Glenk:
Niagara limestone.
Clay samples, 4.
Marcasite, 100 specimens, Wisconsin.
Franklinite.
Chalk.
Fossiliferous iron.
- Charles Lapham, Milwaukee:
Native copper specimens, Lake Superior.
- L. Mathews, Clinton, Iowa:
Iowa peat.
- Louisiana Meadows Co.:
Humus soil, Raceland.
- Milwaukee Coal and Coke Co.:
Specimen coke.
- E. T. Mitchell:
Crystallized gypsum.
Novaculite with manganese incrustations, Hot Springs,
Ark.
- J. B. Railsback, Forbing, La.:
2 specimens glass sand, Caddo Parish.
- Shreveport Chamber of Commerce:
Iron ore.
Glass sand.
Chalk.
Kaolin.
Limestone.
Crude oil.
Pyrites, from Louisiana.
- J. G. Taylor, Raceland:
Soil from reclaimed lands.
- Texas Oil Co., Shreveport:
Crude petroleum from Caddo, Oklahoma, Jennings field.
Refined petroleum products.
- Union Sulphur Co., Sulphur, La.:
Specimens crystallized sulphur in matrix.

W. C. Pickens, Greensboro, Ala.:

- Coral limestone, 67.
- Lava, 2.
- Breccia, 1.
- Fibrolite, 2.
- Lithographic limestone, 4.
- Stalactite, 2.
- Meteorite.
- Fragments of various minerals, 90.

FOSSILS.

Robert Glenk:

- Teeth of *Equus major*, Orleans Parish, 5.

Irion Nelken, Natchitoches:

- 47 fossil teeth of *Lamna*.

W. C. Pickens, Greensboro, Ala.:

- Cyrtoceras*, 4.
- Crioceras*, 1.
- Orthoceras*, 1.
- Pentremites Godonii*, 4.
- Teeth of *Lamna*, 22.
- Coral, 3.
- Serpula*, 1.
- Exogyra costata*, 2.
- Lamellibranchs, 6.
- Ostrea* sp., 2.
- Spirophyton*, 1.
- Platycarpus*, vertebra and scapula, 36.
- Mastodon*, 16.
- Shell conglomerate, 2.
- Fossilized wood, 2.

BOTANY AND FORESTRY.

J. A. Campbell Campbell's Island:

- Loblolly pine cones.

Dr. J. D. Fulton:

- Curious wood flowers from Guatemala.

Robert Glenk:

- Michigan red oak bark.
- Spent tan bark.

- Sumach bark and berries.
 Fruit of Araucaria.
 Cluster of ripe cloves.
 Collection of 20 varieties of fungi.
 100 Plant specimens.
- Owl Bayou Cypress Co. :
 Red and white cypress boards.
 Curled cypress.
- Dr. W. Laurence Stevenson :
 Curious tree burls and fungous growths.
 Specimen of sea bean species.
- Yellow Pine Paper Co., Orange, Tex. :
 Samples pine wood paper.

AGRICULTURE AND HORTICULTURE.

- Agricultural School, Eros :
 German millet.
 Moseby's prolific corn.
 Blackeye cowpeas.
 Spanish peanuts.
 Pumpkin.
 Second crop Irish potatoes.
 Castor beans.
 Cotton plants.
- C. W. Allison, St. Bernard Parish :
 Clusters velvet bean.
- Audubon Park Association :
 Ornamental plants for court yard :
 4 Dracaenias, Pandanus,
 2 Asparagus springerii, Coleus,
 Boston fern, Cocos plumosa.
- C. A. Baker, Webster Parish :
 Spanish peanuts.
 Spanish peanuts on cluster.
 Georgia red peanuts.
 Virginia peanuts.
- H. P. Baker, Arcadia, La. :
 Yellow dent corn.
 Milo maize.



(XIII)

AGRICULTURE AND BOTANY.

- E. L. Bland, Shreveport.
Pumpkin yams.
- P. K. Bony, Madison Parish:
Pumpkins.
Crook neck cashaws.
- C. Calamari:
Specimens Mammee apple.
Alligator pear.
Casabanana.
- City Park Executive Committee, Jos. Bernard, Supt.:
Ornamental plants as follows:
Rubber plants.
Pandanus.
Boston ferns.
Latania borbonica.
- Consumers' Fertilizer Co., Shreveport:
Peanut oil.
Peanut oil press cake.
- W. J. Dawson, Benton, La.:
Six varieties sheaf white oats.
Sheaf barley.
Sheaf rye.
Sheaf wheat.
Five varieties clovers.
Five varieties grasses.
Hungarian millet.
German millet.
Stock beets.
Sheaf Honduras rice.
Sheep's wool.
Five varieties gourds.
Comb honey.
Beeswax.
- A. M. Dupont:
Garlic plants.
- C. W. Eichling:
Ornamental plants, as follows:
Phoenix canariensis.
Latania borbonica.

- Pandanus Veitchii.
 Corypha australis.
 Araucaria excelsa.
- J. G. Ewing, Baton Rouge, La. :
 Sixty-five views of agricultural scenes in Louisiana.
 Six views of parish exhibits at State Fair.
- T. B. Frazier, Minden, La.
 Pearl millet.
 Kaffir corn.
 Reed cane.
- T. J. Fullilove, Shreveport :
 Bermuda grass.
 Purple sugar cane.
- E. L. Gladney, Bastrop, La. :
 Specimen Lespedeza.
- Robert Glenk :
 Cluster of pecans on branch.
 English broad beans.
 Cavalier beans.
 Wild plums.
 Chickory roots.
 Pods of wild cotton.
- B. D. Gray, Shreveport :
 Stock sweet potatoes.
- Philip Haik :
 25 pound stock turnip.
- T. S. Heckford, Choudrant, La. :
 Sorghum cane.
 Chufa nuts.
 Kaffir corn.
 White dent corn.
 Sheaf barley.
 Sheaf red oats.
 Short staple cotton bolls.
- Sam James, Mound, La. :
 Moneymaker pecans.
- Rev. S. S. Jones, Oklahoma :
 Sorghum cane.
 Sorghum seed.

Stock beets.

White dent corn.

Sheaf red oats.

Alex. Kell, Madison Parish :

Specimen purple sugar cane.

Dr. L. Lavedan :

Palmetto leaf fiber, curled and shredded.

C. J. Leary, Gibbsland, La. :

Broom corn.

Sheaf wheat.

Homemade sugar.

L. S. U. Experiment Station, Baton Rouge :

Crystal wax onions.

Red Bermuda onions.

White Bermuda onions.

Red Creole onions.

White shallots.

Wardell wax beans.

W. P. Martin, Arizona, La. :

White dent corn.

Spanish peanuts.

New Era cowpeas.

Pearl popcorn.

Purple sugar cane.

Cotton plants.

Sheaf oats

Broom corn.

Cashaws.

F. L. Maxwell, Mound, La. :

Broom corn.

Long staple cotton.

White dent corn.

John Monkhouse, Jewella, La. :

Red winter wheat.

Sheaf red oats.

Tobacco.

Second crop watermelons.

- T. T. Petty, Bienville Parish:
 Winter muskmelon.
 Red sweet potatoes.
 Short staple cotton bolls.
- Gen. Alf. Prudhomme, Natchitoches, La. :
 Mexican June corn.
 Pumpkins.
 Tobacco.
- M. F. Robinson, Arizona, La. :
 Hickory nuts,
 Walnuts.
 Gourds.
 Sorghum.
 Johnson grass.
 Short staple cotton.
 Cashaw.
 Japan persimmons.
 Quince pears.
 Japanese cane.
- L. M. Rountree, LaBranche, La. :
 Cotton plants.
- Leon Sanders, Plain Dealing, La. :
 Stock beets.
- John Scannel, Shreveport.
 Sheaf Honduras rice.
- Adam Schloeser, Frenier, La., through Steckler Seed Co. :
 Ten pound heads Succession cabbage.
- N. W. Sentell, Collinsburg, La. :
 Long staple cotton.
- Sugar Experiment Station:
 Forty varieties foreign sugar canes.
- J. G. Taylor, Raceland :
 Irish potatoes grown on reclaimed land.
- J. H. Turner, Minden, La. :
 Sheaf rye.
- L. A. Williams, Crowley, La. :
 Sheaf Honduras and Japan rice.
- R. M. Winn, Robeline, La. :
 Specimen of Lespedeza.

C. W. Yearwood, Shreveport:
Specimen of alfalfa.

ZOOLOGY.

SHELLS.

- Conway Allen, Shreveport:
25 Fresh water clams, Black Bayou.
- Robert Glenk:
250 Miscellaneous shells, various sources.
- Baptiste Pier:
Large bulls mouth shell.
- J. A. Thompson:
5 shells from Gulf.
- Dr. D. L. VanDine:
114 Land shells from Oahu, collected 1908.
- Dr. W. Laurence Stevenson:
14 Shells from Bouvoir, Miss.

INSECTS.

- John Boffato:
6 pine borer larva.
10 miscellaneous insects.
- O. L. Carney, Queensboro, La.:
75 specimens showing daily changes in life history of
the honey bee from egg to adult insect; worker,
queen and drone.
Queen cells.
Enemies of honey bee.
- Edwin Chapman, Algiers:
3 large grasshoppers—*Dietyophorus*.
- William Clark:
Male strataegus beetle.
- J. P. DeLabarre:
Honduras tarantula.
- J. F. Denechaud:
Strataegus beetle.
- Cartwright Eustis, Waveland, Miss.:
16 butterflies.
4 moths.
4 beetles.

- Dr. J. D. Fulton:
 Beetle from Guatemala.
- W. W. Fort, Centreville, Miss.:
 Larva of Luna moth.
- Robert Glenk:
 750 miscellaneous insects.
- Miss Myra J. Kennedy:
 54 moths.
 20 cocoons.
 6 butterflies.
 3 beetles.
- Henry Mannel, Rochester, N. Y.:
 25 insects, miscellaneous.
- Carl A. Schmidt:
 5 beetles.

INVERTEBRATES.

- C. A. Schmidt:
 Horse hair worm.
- Baptiste Pier:
 25 miscellaneous spiders.
- Robert Glenk:
 12 mud crabs.
 2 Hermit crabs.
- Joseph Zengel:
 5 Gulf shrimps.
 1 Stone crab.
- T. G. Rapier, Jr.:
 12 young crawfish.

FISHES.

- Baptiste Pier:
 Gulf sturgeon.
 25 mud minnows.

REPTILES.

- Sigmund Behrendsohn:
 Cumberland terrapin.
- R. H. Braun:
 Specimen of Mud Puppy with 25 young.

- Justin F. Denechaud:
 Snapping turtle, young.
 Cumberland terrapin.
- Cartwright Eustis, Waveland, Miss.:
 Harlequin snake, living.
 Red coluber.
- Robert Glenk:
 Banded water snake.
 Western garter snake.
 Mud turtle.
 Tree frog.
 Leopard frog.
- W. S. Keaghey, Ponchatoula, La.:
 Harlequin snake.
- C. L. Johnson:
 Banded rattlesnake.
- John Ludwig, Grand Isle:
 5 Diamond Back terrapin.
- Baptiste Pier:
 Ground snake.
 Cumberland terrapin.

BIRDS.

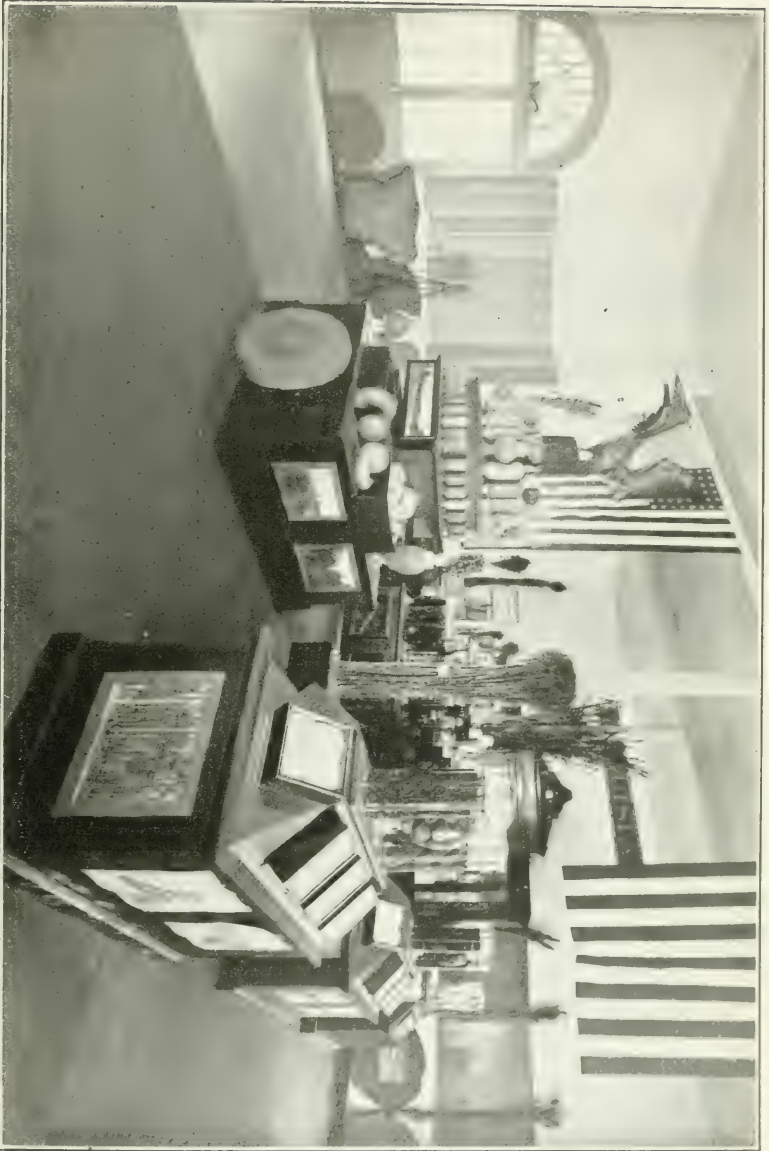
- Robert Glenk:
 Woodcock.
 Snipe.
 Mexican jacana.
 Plumed partridge, male and female.
- Mrs. Charles Hardwick:
 Canary eggs, 3.
- Marion O. Huck, Burwood, La.:
 5 eggs of brown pelican.
- Leonarda Lipari:
 Red headed woodpecker.
- Baptiste Pier:
 5 English sparrow eggs.
- Carl A. Schmidt:
 Two brown pelicans.
 White egret.
 Inca dove.

MAMMALS.

- Mrs. Virges Armistes.
 Antelope horns.
- John Boffato:
 Pair white rats.
- W. Hazen Gates:
 Three dancing mice.
- Glenk, Robert:
 Skull of horse.
- Baptiste Pier:
 Brown bat.
 Black rat.
- Carl Albert Schmidt:
 Horns of common deer.
 Ram's horn.
- Dr. Laurence Stevenson:
 Ball of hair from stomach of steer.

COMMERCIAL DEPARTMENT.

- Roseland Veneer and Package Co., Roseland:
 Specimens of fruit and vegetable packing boxes and crates.
 Specimens of veneers.
 Specimens of baskets and hampers.
- Sol. Stern:
 Prepared Spanish Moss for upholstery.
 Bale X moss.
 Bale XX moss.
 Bale XXX moss.
 Bale Vegetine hair.
- Standard Acid and Fertilizer Company:
 Samples of acid phosphate, dissolved bone black, ground
 bone, 3 varieties bone black, 4 grades commercial mixed
 fertilizers.
- Yellow Pine Paper Mill, Orange, Tex. :
 Specimens of express paper made of pine wood.
- Federico & Pizatti:
 Specimens of—
 Vermicelli.
 Spaghetti.
Macaroni.



- Southern Redistilling and Rectifying Co. :
 Velvet spirits 100°
 Alcohol 188°.
 Cologne spirits 190°, from Louisiana molasses.
- Penick & Ford, Ltd. :
 Velva cane syrup.
- National Rice Milling Co., Ltd. :
 Samples of milled rices.
 Samples of by-products of rice mill.
- Seaboard Refining Co. :
 Samples of refined cotton seed oils.
- Southern Cotton Oil Co. :
 Snowdrift lard substitute.
 Snowdrift soap.
 Wesson cooking oil.
- Union Oil Co. :
 Cotton seed foots soap.
 Cottolene.
 Refined cotton seed oil.
- Sonia Cotton Oil Co., Alexandria :
 Cotton seed flour.
 Bread, rolls and cake made from cottonseed flour.

LIBRARY.

Books and pamphlets relating to history of United States and Louisiana in the Cabildo.

Technical and scientific books and pamphlets in Natural History building.

Additions by Donations and Exchange.

- Alabama—Agricultural Experiment Station of the Alabama Polytechnic Institute, Auburn :
 Bulletins 150-154.
- Arizona—University of Arizona Agricultural Experiment Station, Tucson :
 Twenty-first report.
 Bulletins 64-65.
- California—University of California, College of Agriculture, Agricultural Experiment Station, Berkeley :
 Bulletins 206-226.

- C. R. Orcutt, San Diego:
 American Plants, Vol. 1.
 California Academy of Sciences, San Francisco:
 Proceedings, 4th series, Vols. 1 and 3.
- Colorado—Colorado Agricultural College, Agricultural Experiment Station, Fort Collins:
 Bulletins 145 to 175.
 Press bulletins 51-54.
 Correspondence circulars 10-11.
- University of Colorado, Boulder:
 University of Colorado Studies, Vol. 8, Nos. 2, 3, 4.
- Colorado Iron Works, Denver:
 Smelting practise and equipments for reduction of gold, silver, lead and copper ores.
 Hot blast stove and its application to pyritic smelting.
- State Historical and Natural History Society, Denver:
 Biennial report, 1906-08.
- Colorado College, Colorado Springs:
 Colorado College publication, science series, Vol. 12, No. 10.
- Connecticut—Shell Fish Commission of Connecticut:
 Report, 1903.
- L. Stebbins, Hartford:
 One hundred years of progress of the U. S.
- Connecticut Agricultural Experiment Station, New Haven:
 Report 1910.
 Bulletins 166-169.
- Peabody Museum, New Haven:
 Contributions from the paleontological laboratory, by C. A. Reeds, G. R. Wieland, S. W. Williston, C. Schuchert, A. Randlirsch.
- Yale University School of Fine Arts, New Haven: ,
 Prospectus 1911:
- Connecticut Academy of Arts and Sciences, New Haven:
 Transactions—Vols. 13, 14, 15, 16.
- Connecticut Historical Society, Hartford:
 Report 1910 gift of W. O. Hart.
- Florida—Florida Agricultural Department:
 Quarterly Bulletin, Vol. 21.

- Florida Agricultural Experiment Station, Gainesville:
 Bulletins 100-108.
- Mississippi to Atlantic Inland Waterway Association,
 Appalachicola:
 Bulletin, Vol. 1.
- Georgia—National Association of Manufacturers, Atlanta:
 Proceedings of Atlanta meeting of association.
 Southern Commercial Congress, Atlanta:
 Program of exercises.
- J. Dean Enslow:
 Savannah—Descriptive and Historical. (Gift of W. C.
 Stubbs.)
- Indiana—Eli Lilly & Co., Indianapolis:
 List of authentic materials for food and drug inspection.
- Indiana Academy of Science, Indianapolis:
 Proceedings 1910.
- Illinois—Chicago Academy of Sciences, Chicago:
 Bulletin, Vol. 3, Nos. 4, 5, 6.
- Frederick Brendel:
 Flora Peoriana.
- Chicago Historical Society:
 Collections, Vol. 5.
 Reports 1909-1910.
 Pamphlet—Lincoln.
- Illinois State Museum of Natural History:
 Report on scientific activities, by A. R. Crook.
- Illinois—Illinois Central Railroad, Chicago:
 Concern of Citizens of South in National Drainage.
- John Crerar Library, Chicago:
 Report for 1910.
- Illinois State Historical Library, Springfield:
 Collections, Vols. 4, 5, 6, 7.
 Report 1908-10.
- Illinois State Historical Society, Springfield:
 Transactions, Vols. 11, 12, 13, 14.
- Iowa—Mississippi Valley Historical Association, Iowa City:
 Proceedings for 1910.
- Historical Department of Iowa, Des Moines:
 Annals of Iowa, Vols. 8, 9, 10.

- Rafinesque, sketch of life, by T. J. Fitzpatrick.
 State University of Iowa, Iowa City:
 Bulletin, Vol. 6., Nos. 1 and 2.
 State Horticultural Society, Des Moines:
 Plants of Iowa, by Wesley Greene.
 Davenport Academy of Sciences, Davenport:
 Proceedings, Vols. 11, 12.
- Kansas—Kansas State Agricultural College Experiment Station,
 Manhattan:
 Bulletins 175-177.
 Circulars 13-17.
- Kansas State Historical Society, Topeka:
 Collections, Vols. 10, 11.
 Reports 1909-1910.
 Report of Secretary, 1911.
 Boundary line of Kansas, by G. W. Martin.
 History of manufactures of Kansas, by R. L. Douglas.
- Kentucky—Kentucky State University Agricultural Experiment
 Station, Lexington.
 Bulletins 144-156.
 Reports 1908-1909.
- Louisiana—Acadia Parish Fair Association, Crowley:
 Catalog 1910.
- American Shipping and Industrial League.
 Proceedings of New Orleans meeting, 1888; gift of
 Wm. Beer.
- Architectural Art and Its Allies, New Orleans:
 Volume 5.
- Miss Kate Armistead, New Orleans.
 Three decades of Federal legislation, S. S. Cox, 1885.
 National Democratic Party, W. L. Wilson, 1888.
 Dedication Washington National Monument, 1885.
 Mississippi as a Province and Territory and State, J. F.
 Claiborne.
 War of the Rebellion, Vol. 22, Ser. 1.
- Board of Administrators Charity Hospital, New Orleans:
 Report 1910.
- Board of Administrators Charity Hospital, Shreveport:
 Report 1910.



Board of Administrators Louisiana Hospital for Insane,
Pineville:

Report 1910.

Board of Commissioners for Protection of Birds, Game and
Fish of Louisiana, New Orleans:

Report 1910.

Board of Commissioners for Louisiana for Promotion of
Uniform Legislation. Report 1910. (Gift of W. O.
Hart).

Board of Commissioners of Louisiana Training Institute,
Monroe:

Report 1910.

Board of Commissioners of Police Department, New Orleans:
Report 1907-1910.

Board of Commissioners Port of New Orleans:

Reports 1909-1910.

Board of Control, Lepers' Home:

Report 1910.

Board of Control New Basin Canal and Shell Road, New
Orleans:

Report 1910.

Board of Health of City of New Orleans:

Biennial Report 1908-09.

Monthly Statement of Mortality.

Bossier Parish Fair Association, Plain Dealing:

Catalogue 1910-1911.

Boys' High School, New Orleans:

Angelos Annual for 1910.

Camp Beauregard, No. 130, New Orleans:

Report of Commandant, 1908-1909. (Gift of W. O.
Hart.)

Choctaw Club, New Orleans:

Club Life, Vol. 1.

City Council of Covington:

Map and Description of Covington, La., 1909.

Civil Code Commission of Louisiana:

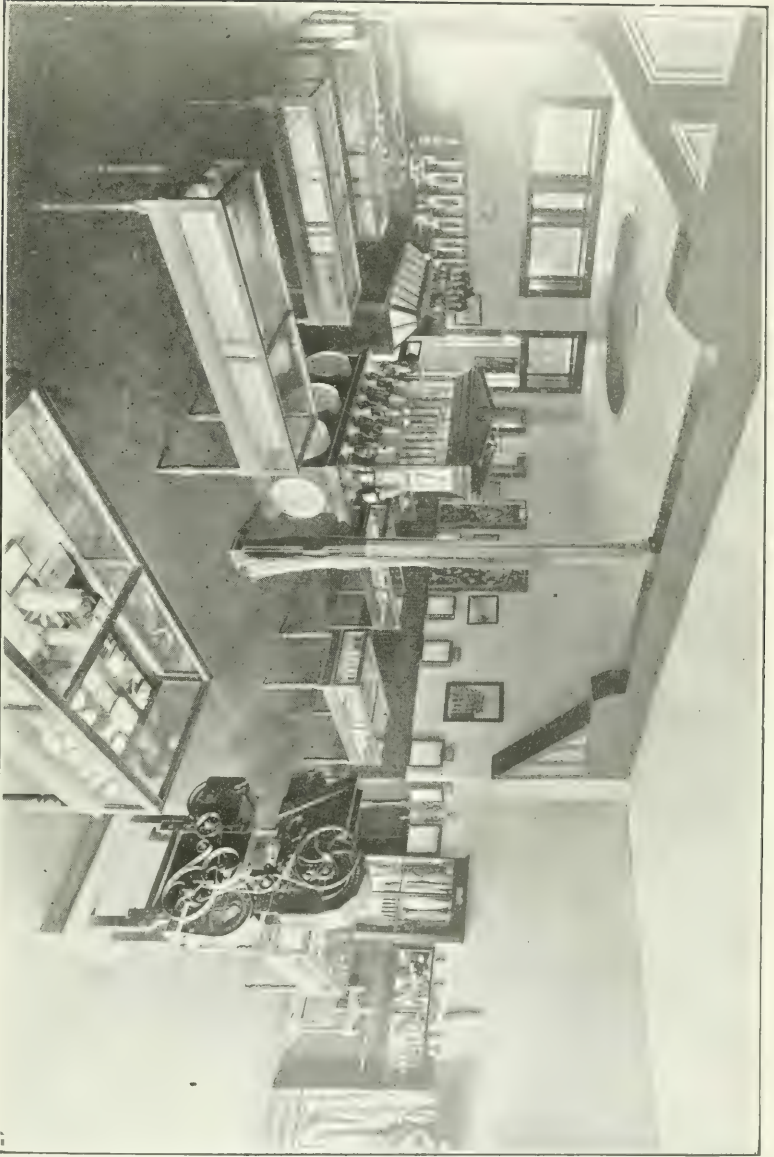
Report 1910.

Revised Civil Code of Louisiana, 1910. (Gift of W. O.
Hart.)

- Commissioner of Louisiana Military Records, New Orleans:
 Report of T. W. Castleman, 1910.
- Constitutional Convention of 1898.
 Annual Reunion and Banquet. (Gift of W. O. Hart.)
- Credit Men's Association, New Orleans:
 Convention Bulletin, 1910.
- Daughters of American Revolution, Spirit of '76 Chapter:
 D. A. R. Lineage Book.
- Deutsche Gesellschaft, New Orleans:
 Report 1908.
- Era Club, New Orleans:
 Charter and By-Laws.
 The New Citizen, Vol. 1.
- Eye, Ear, Nose and Throat Hospital, New Orleans:
 Report 1909.
- Edward Foster, New Orleans:
 Bird Lore, eight numbers.
- Miss C. S. Freret:
 Principles of Philosophy, 1694.
- General Assembly of Louisiana, second session:
 Official Journal of Proceedings of House, 1910.
- Gulf States Farmer, New Orleans:
 Volume 1.
- Harry M. Hall, New Orleans:
 Life and Character of George Washington, for Public
 Schools.
- William O. Hart, New Orleans:
 Report of Committee on Uniform State Laws.
 Report of Committee on Wills, Descent and Distribution.
 Proceedings 19th Conference Commissioners on Uniform
 State Laws, 1909.
 American Uniform Commercial Acts.
 Law of Incorporation—Tentative Draft of Act.
 Law of Partnership—Tentative Draft of Act.
 Copy of Civil Laws of Territory of Orleans, 1808.
 Program of Exercises for Flag Day, Public Schools of
 New Orleans.
 Flag of the United States, pamphlet for use in schools.
 Jefferson Davis at West Point, by W. L. Fleming.

- Program of Exercises, 50th Anniversary Henry Clay Monument Unveiling.
- Dinner Card, 55th Anniversary of W. Makepeace Thackeray's visit to New Orleans.
- Address Before Section of Legal Education, American Bar Association, 1910.
- Judah P. Benjamin Centennial Celebration, program of exercises.
- Portrait Presentation, Bernardo de Galvez to Galvez Exchange.
- Centennial Celebration Arrival Steamboat New Orleans, souvenirs.
- Report of Committee on Uniform State Laws, Lake Charles, La.
- Address, Relation of Public to School Boards, Southern Educational Association.
- Rights of Women in Louisiana.
- Louisiana Bar Association, souvenir menu card, banquet, Baton Rouge, 1910.
- Louisiana Day, April 30th, Essays for Use in Schools, by Harris.
- Echoes of St. Tammany, poems, by R. J. Lincoln.
- Nobles of Mystic Shrine, program 36th session at New Orleans.
- Louisiana Homestead League, Proceedings of Crowley Meeting, 1910.
- Twenty-five Years' Growth of Tangipahoa Parish, by Merry.
- Gulf Coast of Louisiana, by Southern Pacific Railroad.
- Le Reveil de la Louisiane, by L. P. Cannonge.
- Louisiana, by Charles Rupp.
- Confederate Welcome Waltz, by Coralie Renaud, 1909.
- E. L. Corthell:**
 History of Jetties at Mouth of Mississippi River, 1881.
 (Gift of Wm. Beer.)
- Isaac Delgado Museum of Art, New Orleans:
 Catalogue of First Exhibition, 1911.
- Mrs. Dr. Joseph Jones, New Orleans:**
 100 newspapers.
 200 magazines.

- Louisiana Historical Society, New Orleans.
 Proceedings, Vol. 5.
- Louisiana Poultry Fanciers' Association, New Orleans.
 Premium List, 1911.
 Louisiana Poultry Journal, Vol. 1.
- Louisiana State Board of Agriculture and Immigration, Baton Rouge.
 Biennial Report, 14.
 Crop Reports, 1909-1910.
 Louisiana's Invitation, 1911.
- Louisiana State Board of Health, New Orleans.
 Quarterly Bulletin, Vols. 2, 3.
 Report, 1910.
- Louisiana State Fair Association, Shreveport.
 Premium List, 1910-1911.
- Louisiana State Library, New Orleans.
 Catalogue of Books in Law Department.
- Louisiana State Live Stock Sanitary Board, Baton Rouge.
 Report, 1910.
- Louisiana State Museum, New Orleans.
 Report, 1908-10.
 Bulletin 1, Natural History Survey.
 Historical Guide and Folder.
- Louisiana State Normal School, Natchitoches.
 Report, 1910.
- Louisiana State University, Baton Rouge.
 Report, 1910.
 Catalogue, 1910-1911.
 Alumnus, Vol. 5.
 L. S. U. Quarterly, Vol. 6.
 University Bulletin, Vol. 2.
 Reveille, 1909-1910-1911.
 Commencement Program, 1910-1911.
 L. S. U. and Tulane Football Publication, 1910.
 Gumbo, 1910.
- Louisiana State University Agricultural Experiment Station, Baton Rouge.
 Report, 22-23.
 Bulletins, 119-126.



(N.V.)

PRODUCTS OBTAINED FROM THE COTTON PLANT,

- Dr. Susanna Otis, New Orleans.
 Methods in Art of Taxidermy, by Oliver Davie.
- Monroe Fair Association, Monroe.
 Catalogue, 1910.
- New Orleans Board of Trade.
 Reports, 1908-1909-1910-1911.
 Commercial and Industrial Value of Interoceanic Canal, 1900.
- New Orleans Fire Department.
 History of Department, by Thos. O'Connor.
- New Orleans Progressive Union.
 Reports, 1909-1910-1911.
 Mercurio, Vol. 1.
- New Orleans Public Library.
 Report, 1910.
- Parking Commission of New Orleans.
 Report, 1911.
- Picayune Publishing Co., New Orleans.
 Tourists' Guide Book of New Orleans, 1910.
 Daily Picayune.
- Rice Journal and Southern Farmer, Crowley.
 Vol. 14.
- Sewerage and Water Board, New Orleans.
 Semi-Annual Report, 22.
- Shreveport Board of Health.
 Report, 1909.
- Shreveport Chamber of Commerce.
 Commercial Call, Vol. 1.
- State Superintendent of Education, Baton Rouge.
 Ornamentation of School Grounds.
 Rural Elementary Graded Schools. Courses of Study.
- J. Steckler Seed Co., New Orleans.
 Catalogue, 1910-1911.
- Dr. J. A. Storck, New Orleans.
 Eight reprints, medical papers.
- Dr. W. C. Stubbs, New Orleans.
 210 Agricultural Bulletins and Pamphlets.
- Southwest Louisiana Industrial Institute, Lafayette.
 Report, 1910.

- Tax Commission of Louisiana.**
 Report, 1908 (gift of W. O. Hart).
- Treasurer of City of New Orleans.**
 Poll Tax Payments, 1909-1910.
- United Confederate Veterans.**
 Minutes of 19th Meeting.
 Reunion at Memphis, 1909.
 Proceedings 11th Convention, Louisiana Division, Alexandria, La.
 Proceedings 12th Convention, Opelousas, 1910.
- J. W. Vogler, Alexandria.**
 Address, Late vs. Early Planting of Cotton.
 Suggestions to Eradicate the Boll Weevil.
 Facts About the Boll Weevil.
- World's Panama Exposition Company.**
 25 books and numerous pamphlets and magazines.
- Dr. L. A. Wailes, New Orleans.**
 Ellicott's Journal.
 Wailes' Geology of Mississippi.
- Maine—Josselyn Botanical Society, Portland:**
 Bulletins 1, 2, 3.
 Portland Society Natural History, Portland:
 Proceedings, Vol. 2, Part 9.
- Maine Agricultural Experiment Station, Orono:**
 Bulletins, 177-185.
 Circular 369.
- Maryland—American Society for Judicial Settlement of International Disputes, Baltimore:**
 Quarterly, 1910, Nos. 1, 2.
 Quarterly, 1911, Nos. 3, 6.
- Maryland Peace Society, Baltimore:**
 Quarterly, No. 4.
- Atlantic Deeper Waterways Association, Baltimore:**
 Report First Convention, 1908 (gift of W. O. Hart).
- Maryland Agricultural Experiment Station, College Park:**
 Bulletins 141-146.
- Maryland Agricultural College, College Park:**
 Maryland Agricultural College Quarterly, Nos. 47-55.
- Massachusetts—Massachusetts Horticultural Society, Boston:**

- Transactions, 1909, parts 1 and 2.
 Transactions, 1910, part 2.
- American Bison Society, Boston:
 Third Annual Report, 1910 (gift of W. O. Hart).
- Bunker Hill Monument Association, Boston:
 Proceedings, 1909 (gift of W. O. Hart).
- American Antiquarian Society, Worcester:
 Proceedings, Boston Meeting, Vol. 21.
 Handbook.
- Museum of Fine Arts, Boston:
 Report, 1911.
 Museum Bulletins, Nos. 53, 54, 55.
- Society for Preservation of New England Antiquities, Boston:
 Bulletin, Vol. 1, No. 2 (gift of W. O. Hart).
- Springfield Museum of Natural History, Springfield:
 Bulletins 1 and 2.
 Historical Sketch of Museum.
- Massachusetts Delegation to Baton Rouge:
 Souvenir Itinerary of Trip for Dedication of Shaft in
 National Cemetery, Baton Rouge, Nov., 1909 (gift
 of W. O. Hart).
- Michigan—Detroit Museum of Art, Detroit:
 Report, 1911.
 Bulletin, Vol. 5 1-4.
 Bulletin, Vols. 6, 1.
- Michigan Academy of Science, Lansing:
 Report, Michigan Geological and Biological Survey,
 1910.
- University of Michigan, Ann Arbor:
 University Bulletin, Vol. 12, No. 26.
- Minnesota—Minnesota Historical Society, St. Paul:
 Collections, Vols. 12, 13.
 Aborigines of Minnesota, by N. S. Winchell.
- West Publishing Company, St. Paul:
 Rules for Admission to the Bar in the States and Territories
 of the United States.

- Mississippi—Story of Siege and Defense of Vicksburg.
Vicksburg National Military Park, illustrated (gift of
W. O. Hart).
- Missouri—Missouri Historical Society, St. Louis:
Missouri Historical Society Collections, Vol. 3, Nos.
2, 3, 4.
- State Historical Society of Missouri, Columbia:
Missouri Historical Review, Vol. 5, Nos. 3, 4.
Missouri Historical Review, Vol. 6, Nos. 1, 2.
Reprint, First Constitution of Missouri.
- Charles P. Chouteau, St. Louis:
River Transportation of the West, Present Condition
and Future, 1878 (gift of Wm. Beer).
- Educational Museum, St. Louis:
Catalogue of Collections, 1911.
- Missouri Botanical Garden, St. Louis:
Reports 21 and 22.
- Robert S. Taylor:
Improvement of the Mississippi River, 1884 (gift of
Wm. Beer).
- Academy of Science, St. Louis:
Transactions, Vol. 18, 19, 20.
- Nebraska—J. L. Webster, Topeka:
The West—Its Place in American History.
- Nebraska State Historical Society, Lincoln:
Proceedings, Vol. 15.
- Nebraska Constitutional Convention, 1871.
- Transmississippi Commercial Congress, Omaha:
Proceedings, 1891 (gift of Wm. Beer).
- W. Straley, Nelson:
Archaic Gleanings.
- New Hampshire—New Hampshire Agricultural Experiment Sta-
tion, Durham:
Bulletins 148-155.
- New Jersey—New Jersey Agricultural Experiment Station, New
Brunswick:
Bulletins 230-241.
- Live Stock Commission of New Jersey, Trenton:
Circular 1.



- J. T. Baker Chemical Company, Phillipsburg :
 Chemist and Analyst, Vol. 1.
- New Jersey State Museum, Trenton :
 Insects of New Jersey and Report 1909.
 Plants of New Jersey and Report, 1910.
- Historical and Antiquarian Society, Vineland :
 Reports, 1909-1910.
- New Mexico—University of New Mexico, Albuquerque :
 Bulletin, Vol. 1, Nos. 2, 4.
- Santa Rita Mining Company, Grant County :
 Report, 1909.
- New York—New York State Historical Association, Glen Falls :
 Proceedings, Vols. 9-10.
- American Association for International Conciliation :
 Bulletins 26-52.
 Monthly book list, 1910.
- Art Commission of City of New York.
 Catalogue of works of art belonging to New York City,
 1909.
- American Embassy Association, New York :
 Illustrated report, 1910 (gift of W. O. Hart).
- American Telephone and Telegraph Co. :
 Report for 1910.
- American Museum of Natural History :
 Reports for 1909-1910.
 American Museum Journal, Vols. 10, 11, 12.
 Guide Leaflets, 32 to 35.
- National Arts Club, New York :
 Catalogue first prize exhibition, 1912.
- American Scenic and Historic Preservation Society, Albany :
 Report, 1908 (gift of W. O. Hart).
- Brooklyn Institute Arts and Sciences Museum, Brooklyn :
 Science bulletin, Vol. 1.
- Buffalo Society of Natural Sciences, Buffalo :
 Directory American Museums, 1910.
- Consumers' League, New York :
 Report 1903.
- Mutual Life Insurance Co., New York :

- Financial statement and report, 1910.
 New York State Historical Association, Mt. Vernon:
 Proceedings, Vols. 9 and 10.
- Single Tax Conference, New York:
 Summary of work done by Jos. Fels Fund Commission,
 W. O. Hart.
- New York Agricultural Experiment Station, Geneva:
 Bulletins 322-341.
- North Carolina—North Carolina Department of Agriculture,
 Raleigh:
 Bulletins, Vols. 30, 31, 32.
- North Carolina Agricultural Experiment Station, West
 Raleigh.
 Bulletins 213-220.
- University of North Carolina, Chapel Hill:
 James Sprunt Historical Publications, Vol. 10, Nos. 1, 2.
 Vol. 11, No. 1.
- North Carolina Historical Commission, Raleigh:
 Publication, Vol. 1.
- North Dakota—North Dakota Agricultural College, Agricultural
 Experiment Station, Fargo:
 Bulletin 89.
- State Historical Society of North Dakota, Bismarck:
 Collections, Vol. 3.
- Ohio—Cleveland Chamber of Commerce, Cleveland:
 Report Cleveland Industrial Exposition, 1909.
- Firelands Historical Society, Norwalk:
 Golden Jubilee Report, 1907.
- Ohio Historical and Philosophical Society, Columbus:
 Quarterly, Vol. 6, Nos. 1, 2, 4.
- Lloyd Library, Cincinnati:
 Bibliographical contributions, Nos. 1-6.
 Bulletin Lloyd Library, Botany, Pharmacy and Materia
 Medica, 1911:
 Botany series 2.
 Pharmacy series 2, 3, 4.
 Reproduction series 7.
 Mycological series 4.
 Mycological notes, 30-35 and index.

University of Cincinnati:

University of Cincinnati Record, series 1. Vol. 7.

Oklahoma—State University of Oklahoma, Norman:

Research bulletin No. 4.

Oklahoma Historical Society, Oklahoma City:

Quarterly Historia, Vol. 2.

Oregon—Oregon Agricultural College and Experiment Station,
Corvallis:

Bulletins 106-111.

Circulars 7-18.

Pennsylvania—American Academy of Political and Social
Science, Philadelphia:

Reprint from proceedings, No. 620.

American Catholic Historical Society, Philadelphia:

Records, Vol. 22, Nos. 1, 2, 3, 4.

Vol. 23, No. 1.

Carnegie Library of Pittsburg:

List of agricultural books.

Delaware County Institute of Science, Media:

Proceedings, Vol. 5, Nos. 3, 4.

Vol. 6, Nos. 1, 2, 3.

Indian Rights Association, Philadelphia:

Report on objects, methods and achievements.

Pennsylvania State College Agricultural Experiment Sta-
tion, State College:

Bulletins 97-113.

Pennsylvania Prison Society, Philadelphia:

Journal of prison discipline, No. 50.

Pennsylvania Museum and School of Industrial Art, Phila-
delphia:

Report 1911.

Bulletin, Vols. 8, 9 and 10.

Pennsylvania State Museum, Harrisburg:

Report for 1910, Division of Education.

Philadelphia College of Pharmacy, Philadelphia:

Bulletin, Vol. 4.

Philadelphia Museums, Philadelphia:

Report 1910, 1911.

- School museum in relation to geography and commerce,
Toothaker.
- History and development of Philadelphia museums.
Instructions to teachers.
Geographical collections.
Notes on Madagascar collection.
Textile industries of Philadelphia.
- Railway World, Philadelphia:**
Depreciated Currency and Diminished Railway Rates.
- University of Pittsburg, Pittsburg:**
Bulletin, School of Mines, Vol. 7.
- Warren Academy of Sciences, Warren:**
Transactions, Vol. 1, Vol. 2.
- Woman's Medical College, Philadelphia:**
Esculapian, Vol. 2.
Transactions of Alumni Association, 1910-1911.
- Wyoming Historical and Geological Society, Wilkesbarre:**
History, Charter, By-Laws, etc., of Society, 1907.
- Rhode Island—Agricultural Experiment Station of Rhode Island
State College, Kingston:**
Bulletins 144-148.
Reports 1910, 1911.
- Park Museum, Providence:**
Park Museum Bulletin, Vol. 2, No. 2-6.
- Rhode Island Historical Society, Providence:**
Proceedings 1908, 1909, 1910, 1911.
- Commercial Law League of America:**
Bulletin, Vol. 15, No. 33.
Rhode Island Convention Report. (Gift of W. O. Hart.)
- South Carolina—Charleston Museum, Charleston:**
Bulletins, Vols. 6, 7, 8.
Audubon Society of South Carolina, Columbia:
Third Annual Report.
- Texas—Texas State Historical Association, Austin:**
Quarterly, Vol. 14, Vol. 15, parts 1-4.
Texas Department of Agriculture, Austin:
The Story of Texas, by W. T. Carter, Jr.
- Tennessee—University of Tennessee, Knoxville:**
University Record, Vol. 8.

(XVIII)

INSECTS AND INSECT PRODUCTS.



- University of Tennessee Agricultural Experiment Station,
Knoxville:
Bulletins 89-91.
- Utah—Utah Agricultural College Experiment Station, Logan:
Bulletins 107-114.
- Utah State Farmers' Institute, Salt Lake City:
Annual Report 13.
- Deseret Museum, Salt Lake City:
Bulletin, New Series, 1-2.
- Virginia—Board of Trade, Norfolk:
Handbook of Norfolk. (Donated by W. C. Stubbs.)
- Industrial Commission of Norfolk:
Norfolk—Commercial, Historical and Geographical.
(Gift of W. C. Stubbs.)
- Alex J. Wedderburn:
Historic Alexandria:
- Vermont—Fairbanks Museum, St. Johnsbury:
Report for 1910.
- West Virginia—West Virginia University Agricultural Experiment Station, Morgantown:
Bulletins 105-135.
- Washington, D. C.—American Historical Association:
Annual Report 1908-1909.
- Committee on Marking Points of Historic Interest:
Points of Historic Interest in Washington. (Gift of
Dr. Marcus Benjamin.)
- Commissioner of Corporations:
Report on Cotton Exchanges, parts 4-5, 1909.
- Forty-sixth Congress, Second Session:
Memorial Address, Rush Clark, Iowa.
Memorial Address, Geo. S. Houston, Alabama. (Gift of
Dr. W. C. Stubbs.)
- Forty-ninth Congress, Second Session:
Report U. S. Nicaragua Surveying Party, 1885.
- Fifty-eighth Congress, Third Session:
Congressional Record, Vol. 39. (Gift of W. O. Hart.)
- Fifty-sixth Congress:
Committee on Foreign Relations, Reports, 1789-1901.
(Gift of W. O. Hart.)
- Fifty-ninth Congress, First Session:

- Congressional Record, Vol. 40. (Gift of W. O. Hart.)
 Sixtieth Congress, First and Second Session:
 Memorial Address, Adolph Meyer, Louisiana.
- Sixty-first Congress:
 Congressional Directory, 1909-1910.
 Memorial Address, Robert C. Davey, Louisiana.
- United States Department of Agriculture:
 Year Book, 1909.
 Year Book, 1910.
 Farmers' Bulletins 364-486.
- U. S. Department of Agriculture, Office of Secretary:
 Circular 38.
- U. S. Department of Agriculture, Bureau of Animal Industry:
 Report 1910.
 Bulletins 130-140.
 Circulars 182-183.
- U. S. Department of Agriculture, Biological Survey:
 Report 1910-1911.
 Circulars 71-85.
 Reprints 560.
 Bulletins 33-41.
- U. S. Department of Agriculture, Bureau of Chemistry:
 Report 1910-1911.
 Circulars 63-73.
 Bulletins 126-146.
- U. S. Department of Agriculture, Bureau of Entomology:
 Report 1911.
 Bulletins 85-109.
 Circulars 139-140.
- U. S. Department of Agriculture, Office of Experiment Stations:
 Report 1910-1911.
 Experiment Station Record, Vols. 24, 25.
 Circular 110.
 Bulletins 227-243.
- U. S. Department of Agriculture, Forest Service:
 Bulletins 80-100.
 Reprint, Bulletin 36.

- United States Department of Agriculture, Librarian:
Report, 1911.
- United States Department Agriculture, Bureau of Plant
Industry:
Report 1911.
Bulletins 141-221.
Circular 88.
- United States Department Agriculture, Office of Public
Roads:
Bulletin 35.
Report on Exhibit at Alaska Yukon Exposition.
- United States Department Agriculture, Bureau of Soils:
Bulletins 53-80.
Circular 43.
- United States Department Agriculture, Bureau of Statis-
tics:
Crop Reporter, Vol. 13.
Bulletin 78.
Report, 1911.
- United States Department Agriculture, Weather Bureau:
Report, 1911.
Daily Weather Bulletin—Louisiana.
- Department of Commerce and Labor, Bureau of Census:
Century of Population Growth, 1790-1900.
Statistics on Marriage and Divorce, 1867-1906 (gift of
W. O. Hart).
- Department of Commerce and Labor, Coast and Geodetic
Survey:
Report, 1910.
- Department of Commerce and Labor, Bureau of Fisheries:
Bulletin of Bureau, Vol. 28.
Bureau of Fisheries Documents, 729-759.
- Department of Commerce and Labor, Bureau of Manufac-
tures:
Daily Consular and Trade Reports.
- Department of the Interior, United States Geological Sur-
vey:
Bulletins, 459-461.

International Bureau of American Republics:

Bulletin, 1908 (gift of W. O. Hart).

Card of Flags of American Republics (W. O. Hart).

Commercial Nomenclature, Vol. 1.

10 descriptive pamphlets of South American Republics
(gift of W. O. Hart).

Interstate Commerce Commission:

Commercial and Agricultural Organizations of United
States.

Bulletins, Revenues and Expenditures Steam Roads,
18-35.

Statistics of Express Companies, 1910.

Statistics of Railways of United States, 1909-1910.

Library of Congress:

American and English Genealogies.

Naval Records, American Revolution.

Paul Jones Manuscripts.

James Monroe Papers.

Benjamin Franklin Papers.

Washington Manuscripts.

National Geographic Society:

National Geographic Magazine (gift of R. Glenk).

National Tariff Commission Association:

The Neutral Line, R. R. Towne.

National Press Club:

Third Annual Book.

Secretary of the Navy:

Official Records of Union and Confederate Navies, Vol.
23-24.

Smithsonian Institution:

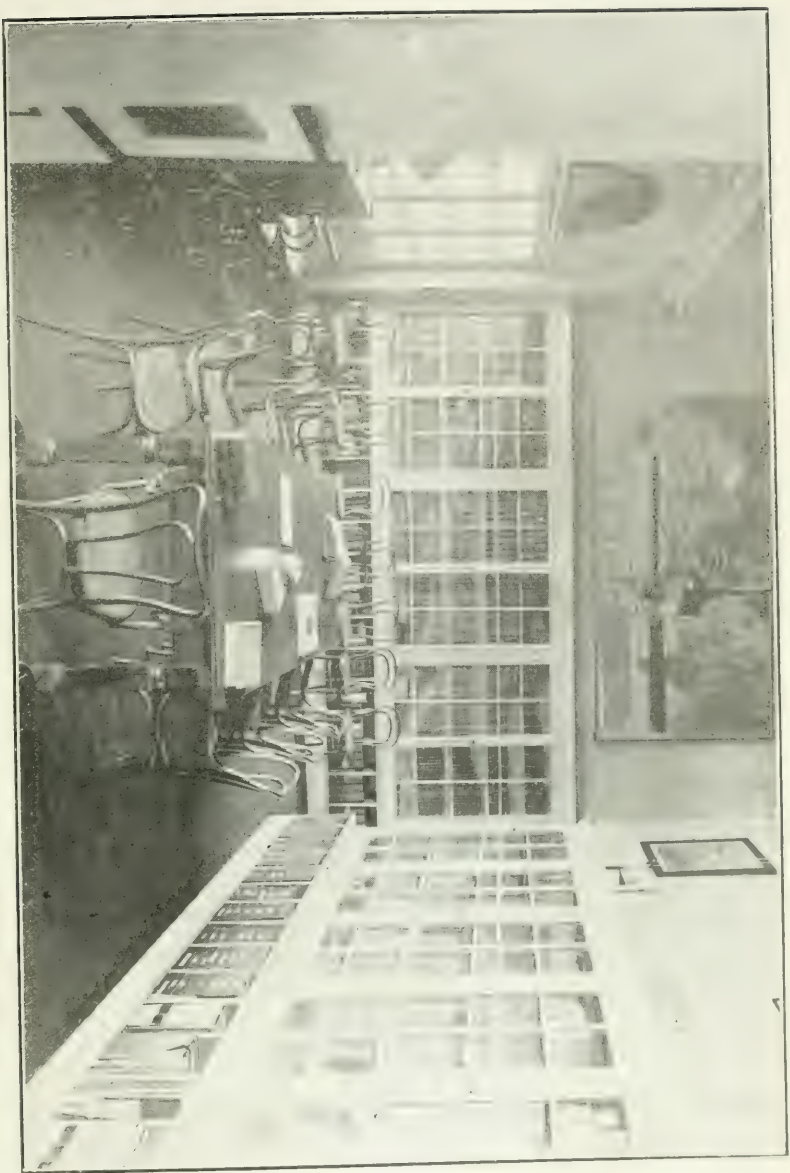
Annual Reports, 1909-1910-1911.

Reports United States National Museum, 1909-1910-
1911.

Proceedings, United States National Museum, Vols.
38-40.

Bulletins 71-77.

Contributions, United States National Herbarium, Vols.
13-14-15.



(XIX)

LIBRARY, NATURAL HISTORY BUILDING.

Treasury Department, Public Health and Marine Hospital
Service of United States:

- Reports on Pellagra.
- Reports on Hookworm.
- Reports on Tuberculosis.

Woodbury Blair:

Spanish Settlements in United States, 1513-1561, by
Woodbury Lowery.

Spanish Settlements in United States, Florida, 1562-1574, by
Woodbury Lowery.

Wisconsin—Wisconsin Archaeologist, Milwaukee:

Vol. 10 (gift of C. Lapham).

Wisconsin Archaeological Society, Milwaukee:

Report of Field Assembly, 1910 (gift of C. Lapham).

University of Wisconsin Agricultural Experiment Station,
Madison:

- Reports 25, 26, 27.
- Research bulletins 1-17.
- Bulletins 189-215.
- Bulletins, general series, 308.
- Circulars of Information, 13-29.

Public Museum, Milwaukee:

- Reports, 1909, 1910, 1911.
- Bulletin, Vol. 1, Parts 1, 2.

Australia, New South Wales—Australian Museum, Sydney:

- Report, 1909-1910-1911.
- Records of Australian Museum, Vols. 8-9.

Botanic Gardens and Government Domains, Sydney:

Report 1909-1910.

Prof. J. H. Maiden, Government Botanist and Director Bo-
tanic Gardens, Sydney:

- Records of Australian Botanists.
- Notes from Botanic Gardens.
- Plea for Study of Phenological Phenomena in Australia.
- Bitter Pit in Apples.

Queensland, Bureau of Sugar Experiment Stations:

Report for 1910.

Queensland Agricultural Journal:

Journal, Vol. 25.

- Victoria, Dr. Albert J. Ewart, Melbourne:
- Contributions to Flora of Australia, Nos. 9-17.
 - Reprints from Victorian Naturalist, 3.
 - Reprints from Victorian Department Agriculture, 15.
 - Reprints from Proceedings Royal Society, 4.
- Department of Agriculture, Victoria:
- Recording Census of Victorian Flora, A. J. Ewart.
 - Delayed Germination of Barleys, A. J. Ewart.
 - Seed Tests, A. J. Ewart.
 - Proclaimed Plants of Victoria, A. J. Ewart.
 - Amateur Nomenclature, A. J. Ewart.
 - Contributions to Flora of Australia, A. J. Ewart.
 - Vernacular Names of Victorian Plants, A. J. Ewart.
- Western Australia—Geological Survey of Western Australia,
Perth:
- Report Geological Survey, 1909-1910.
 - Bulletins 36-41.
- South Australia—Public Library, Museum and Art Gallery,
Adelaide:
- Report of Board of Governors, 1909-1910-1911.
- Austria-Hungary—Bohemian Union for Encouraging Strangers
to Visit Bohemia, Prague:
- Handbook of Prague.
 - British Journalists at Pödebrady.
- Landes Museums Verein für Vorarlberg in Bregenz:
- Annual Reports, 1906-1907-1908-1909-1910-1911.
- La Société des Médecins Tchèques, Prague:
- Revue de Médecine Tchéque, Vol. 3.
- Naturforschenden Verein, Brunn:
- Verhandlungen, Vol. 48.
 - Report 24.
 - Ergebnisse der Phaenologischen Beobachtungen, 1906.
- Städtischen Museums Carolino Augusteum, Salzburg:
- Report, 1909.
- Argentine Republic—Estación Experimental Agrícola, Tucumán:
- Revista Industrial y Agrícola de Tucumán, Vol. I, 1-10.
- Provincia de Tucumén:
- Album Argentino, 1909 (gift of Dr. W. C. Stubbs).

- Museo Nacional de Historia Natural, Buenos Aires:
Annals, series 3, Vols. 11-12-13-14.
- Belgium—Belgian Antarctic Expedition:
Report of Voyage of Belgica, 1904, A. de Gerlache de
Gomery.
Association Internationale Permanente des Congres de Navi-
gation.
Report of Congress of Navigation, 1904.
- Ministere de l'Interieur de l'Agriculture, Brussels.
Bulletin de Jardin Botanique, Vol. 2.
- Brazil—Sociedade Scientifica de Sao Paulo:
Revista, Vols. 4-5-6.
- British Guiana—The Daily Argosy, Georgetown:
Daily Argosy, Vol. 59.
- Canada—Department of Mines, Geological Survey, Ottawa:
Catalog of Canadian Birds, by J. Macoun and J. M.
Macoun, 1909.
- L'Universite Laval, Quebec:
Annaire, 1911-1912..
- Natural History Society of New Brunswick, St. John:
Bulletin, Vol. 6.
- Cuba—Estacion Central Agronomica de Cuba, Santiago de las
Vegas:
Bulletins 5-19.
Circulars 26-38.
Reports, 1905-1909.
- England—Horniman Museum and Library, London:
Report, 1910.
- Manchester Museum, Owens College, Manchester:
Report, 1909-1910-1911.
Catalogue of Hepaticae.
Handbooks 70-71.
Tombs of Two Brothers, Egypt.
- France—Ministere de l'Instruction Publique, Paris:
La Constitution Americaine, Vossion & Chailley.
- Germany—Alttertums Gesellschaft, Insterburg:
Festschrift, 30th Stiftungsfeste.
Chemiker Zeitung, Cothen:
Chemiker Zietung, Vol. 34.

- Hamburgische Botanische Staats Institut, Hamburg :
 Report, 1909.
 Mittheilungen 27.
 Reprint No. 17.
- Naturhistorischen Gesellschaft, Colmar :
 Bulletin, Vols. 9-10.
 Catalog of Library, 1910.
- Naturhistorischen Gesellschaft, Hanover :
 Reports, 1909-1907.
- Naturhistorischen Gesellschaft, Nurnberg :
 Abhandlungen, Vol. 18.
- Rautenstrauch-Joest Museum fur Volkerkunde, Cologne :
 Reports, 1904-1907.
- Station fur Pflanzenschutz, Hamburg :
 Report, Vol. 8.
 Reprint Nos. 4-6.
- Verein fur Naturkunde, Cassel :
 Festschrift, 1886.
 Festschrift, 1911.
 Abhandlungen und Bericht Nos. 48-52.
- Versuchsstation fur Pflanzenschutz, Halle a Salle :
 Report, Vol. 9.
- Hawaii—Hawaii Agricultural Experiment Station, Honolulu :
 Reports, 1909-1910.
 Bulletins 22-25.
 Press bulletins 27-33.
- India—Hari das Khandelwal, Allahabad :
 Conquest of Scepticism.
- Ireland—Natural History and Philosophical Society, Belfast :
 Report and Proceedings, 1910-1911.
- Japan—Municipal Electric Works, Kyoto :
 Lake Biwa Canal and Its Hydro-Electric Power.
 Sapporo Natural History Society, Sapporo :
 Transactions, Vol. 3.
- Java—Archief Java Suikerindustrie, Surabaya :
 Archief, Vols. 14-16.
- Mexico—Mexican Central Railroad, Mexico City :
 Facts and Figures About Mexico.



(XX)

TOPOGRAPHIC MAPS AND TRANSPORTATION.

- Netherlands—Rijks Museum van Oudheden, Leiden:
Report, 1910-1909.
- Norway—Stavanger Museum, Stavanger:
Reports, 1909-1910.
Tromso Museum, Tromso:
Tromso Museums Aarshefter, Vols. 31-32-33.
Reports, 1908-1909.
- New Zealand—Wanganui Public Museum, Wanganui:
Reports, 1910-1911.
- Natal—Natal Government Museum, Pietermaritzburg:
Catalog of Rocks and Minerals, 1909.
Annals of Natal Government Museum, Vol. 2, parts 1-2.
- Porto Rico—Porto Rico Agricultural Experiment Station, Mayaguez:
Report, 1910-1909.
Bulletins 9-11.
Circular 13.
- Peru—Estacion Experimental Para Cana de Azucar, Lima:
Bulletins 1-4.
J. Vavasour Noel, Lima:
Peru Today, Vol. 2.
- Portugal—La Societe Portugaise des Sciences Naturelles, Lisbon:
Bulletin, Vols. 1-2-3-4.
- Philippines—Department of Interior, Bureau of Science, Manila:
Report on Sugar Industry of Island of Negros, 1910.
Manila Times, Manila:
Investors' and Settlers' Edition, 1910.
- Southern Rhodesia—British South African Company, Salisbury:
Culture of Tobacco, pamphlet.
- Sarawak, Borneo—Sarawak Museum, Kuching:
Report, 1910.
Sarawak Museum Journal, Vol. 1.
- San Salvador—Museo Nacional, San Salvador:
Annals, Vol. 5, No. 30.
- Sweden—Uppsala Universitet, Uppsala:
Linnefest Skrifter, Nos. 1-6.
Linneportratt.

- Switzerland—Societe Fribourgeoise des Sciences Naturelles, Fribourg:
 Bulletin, Vol. 18.
- Turkey—American Observer, Constantinople:
 Facts and figures about Abdul Hamid II.
- Uruguay—Museo Nacional, Montevideo:
 Flora Uruguay, Vol. 4, parts 1-2.
 Annals, Vol. 7, No. 4.
- Venezuela—El Museo Nacional, Caracas:
 Report, 1909.
 Handbook of Venezuela, N. V. Goiticoa.
 Ministerio de Fomento, Caracas:
 Yearbook of Venezuela, 1908.

ADDITIONS BY PURCHASE.

- Stone Age in North America. W. K. Moorehead, 2 Vols., 1910.
 Proceedings American Association of Museums, Vols. 4-5.
 American Art News, Vols. 9-10.
 Application of Art to Manufactures, G. C. Mason.
 Bird Lore, Vols. 12-13.
 Science, Vols. 32-33.
 Atlas de Toutes les Parties Connues du Globe Terrestre, 1780.

NEWSPAPERS AND PERIODICALS ON FILE.

- Times-Democrat, New Orleans.
 Picayune, New Orleans.
 New Orleans Item.
 Daily States, New Orleans.
 Shreveport Times.
 The Daily Signal, Crowley.
 Weekly Town-Talk, Alexandria.
 The Gibsland News.
 The Feliciana Record.
 The True Democrat, St. Francisville.
 Lafayette Advertiser, Lafayette.
 The Dodson Times, Dodson.
 Lake Arthur Herald, Lake Arthur.
 LaFourche Leader, Lockport.

Louisiana Planter, New Orleans.
 The Modern Sugar Planter, New Orleans.
 Rice Journal and Southern Farmer, Crowley.
 Gulf Coast Farmer, New Orleans.
 The Trucker and Farmer, New Orleans.
 Louisiana State Farmer, Shreveport.
 United States Daily Weather Report.
 The Reveille, Baton Rouge.
 Mercurio, New Orleans.
 The New Citizen, New Orleans.

PUBLICATIONS.

Besides the publication of the Biennial Report, the Museum has issued the first Bulletin of the Natural History Survey of Louisiana. The subject of this bulletin is *The Leguminosae of Louisiana*, by Professor R. S. Cocks, and is illustrated by 40 line drawings of plants belonging to this order, new or not heretofore pictured.

The usual map and guide to the historical points in colonial New Orleans has also been republished and is furnished free to visitors.

PUBLIC LECTURES.

No lectures were given by the Museum's public lecture committee during 1910 or 1911.

COURTESIES EXTENDED.

The Louisiana State Museum is appreciative of the courtesies extended by the newspaper press of New Orleans and Louisiana for much valuable space and many expressions of encouragement contributed.

Our thanks are also due to the many and generous contributors to the Museum Collections, both as gifts and as loans, without which there would have been absolutely no progress or development.

MUSEUM SERVICE.

The employees of the Museum are as follows:

Robert Glenk, curator.

Miss Carrie S. Freret, librarian and assistant in History Department.

John Boffato, skilled mechanic.

James Moulton, Confederate veteran, watchman, Cabildo.

Baptiste Pier, janitor.

Jacob Remy Pierre, janitor.

SOCIETIES USING THE MUSEUM HALLS FOR MEETINGS.

Louisiana Historical Society.

Louisiana Naturalists Society.

Louisiana Sugar Planters' Association.

Colonial Dames of America in Louisiana.

